

## INSTALLATION PROCEDURE

# Wabo®QuakeWall

*High Performance Seismic Wall Panel*

### RECOMMENDED EQUIPMENT

Watson Bowman Acme recommends the following equipment and tools for ease of installation:

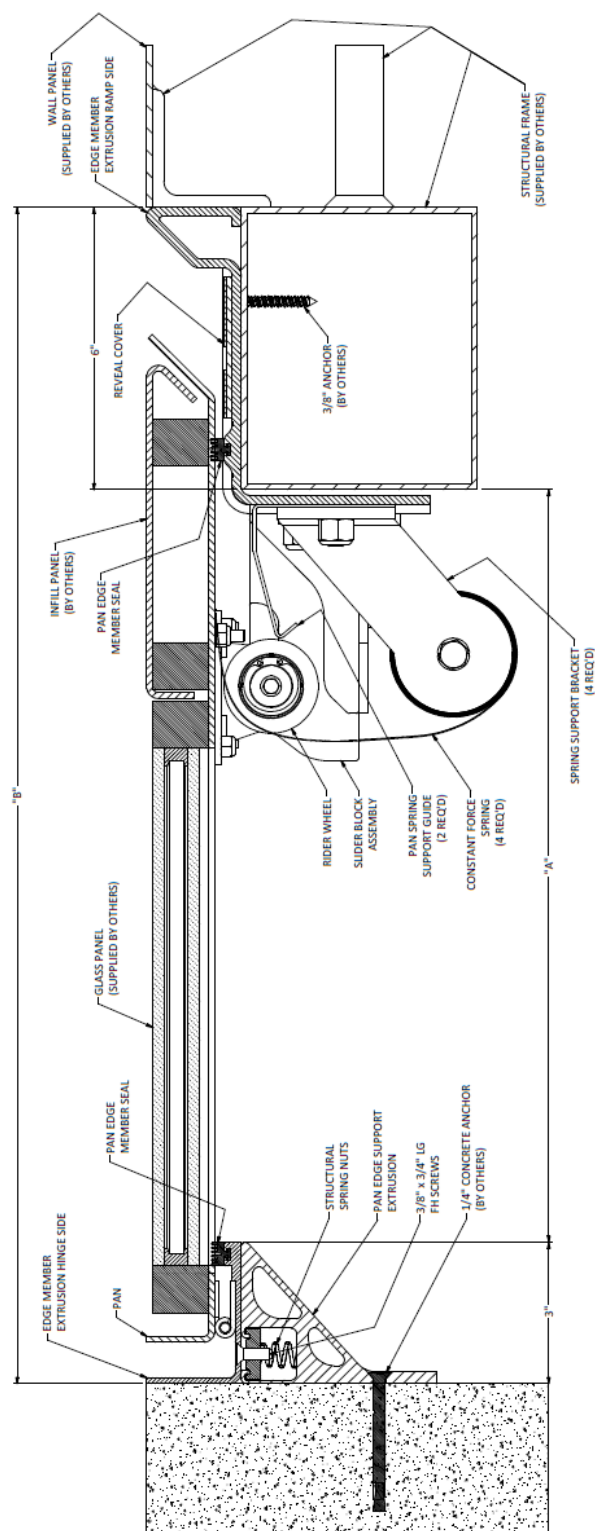
- Crane/heavy wall panel handling and positioning equipment.
- Electric screwdriver for installing wall anchors.
- Electrical power.
- Prybar(s) to open wall panel if necessary
- Wood blocks for shimming.
- Approved shop drawings.
- Cleaning equipment as necessary to ensure the blockout is free from debris.
- Proper safety PPE (glasses, leather gloves, hard hat, steel toe boots, high visibility work vest, etc.)



QuakeWall frame assemblies are made from lightweight aluminum. However, the panel infill weight can be substantial. Please ask a WBA representative for panel weight estimates.



We create chemistry



Watson Bowman Acme Corp.  
95 Pineview Drive  
Amherst, NY 14228  
phone: 716-691-7566  
fax: 716-691-9239  
wbacorp.com



## A. Preparation

The joint interface must be clean (free of dirt, coatings, rust, grease, oil and other contaminants), sound and durable.

Edge spall or slant shear bondline conditions should be keyed out prior to installation following ACI guidelines.

If attaching to steel surfaces, inspect the steel to ensure it is in good condition. If pack rust or heavy oxidation is present, it must be removed. If steel loss is too great as determined by the Engineer of Record, the steel substrate will need to be removed and replaced.

Blockouts must be flat and level to within 1/16"

Structure members must be capable of supporting QuakeWall panels as detailed in the contract drawings. The hinge-side joint-to-structure connections support the weight and seismic forces of the panel, care should be taken to ensure that QuakeWall is anchored to a structurally sound blockout.

Review shop drawings, form QuakeWall module handling and placement plan. Installers should be familiar with QuakeWall components and handling procedures prior to starting installing.

If edge extrusion mounting holes do not line up with structural framing and holes need to be re-drilled in the extrusion, the holes must be counter-sunk.

## B. Installation

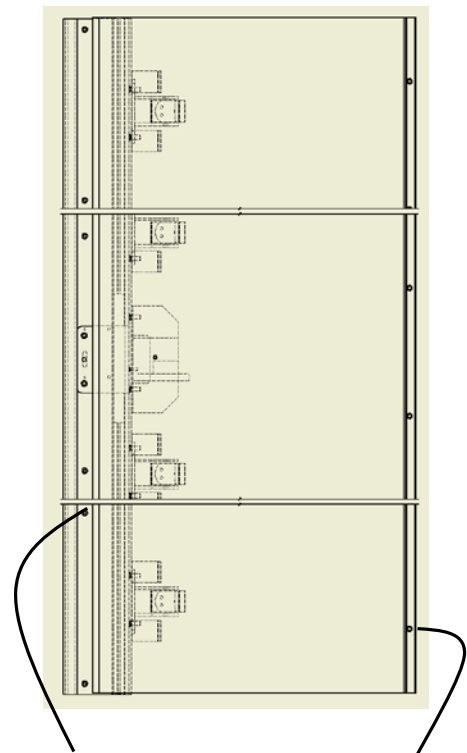
Install fire barrier system and/or waterproof membrane, if required, prior to positioning the QuakeWall module.

Insert edge member alignment pins into the previously installed QuakeWall module. Align new QuakeWall module and lower the new module onto the pins.

QuakeWall is shipped completely assembled with installation wedges to hold the joint open in its nominal position. Adjust wedges by inserting shims such that the edge members aligned with the blockout.

QuakeWall requires no component assembly and can be installed with the panel closed. Simply place the module, adjust the setting to match the structure opening if required, and install the 3/8" wall anchors.

This module is now installed, and the wall joint is now ready for the next QuakeWall module to be installed.



Latch Side Anchors  
- 3/8" @ 16" OC

Hinge Side Anchors  
- 3/8" @ 12" OC

### C. Joint Access after Installing Wabo®QuakeWall

If access to inside the joint behind the panel is desired, unscrew the latch and slide it over 1" to release the locking mechanism. The panel is held down with constant force springs totaling more than 100 lbs. Use a prybar to pry the panel up for access, employ safety measures to ensure the spring loaded panel does not close unintentionally.

After access operations are complete, release the spring loaded panel slowly until it is completely closed. Slide the latch closed, allowing the latch pin to engage and reinstall the latch screws. The latch should now be locked such that the panel cannot be pried open.

### D. Field Service Assistance

Throughout our history, particular attention to providing best in class products and services to our customers has been a key focus. Watson Bowman Acme as a result offers Field Service Assistance. Please contact us to discuss rates and schedules with our Field Service representatives to address any unknown field conditions, project specific recommendations and the proper installation procedures of our products.



Unscrew, Slide Up to Release  
Latch

#### LIMITED WARRANTY:

Watson Bowman Acme warrants that this product conforms to its current applicable specifications. WATSON BOWMAN ACME MAKES NO OTHER WARRANTY, EXPRESS OR IMPLIED, INCLUDING ANY WARRANTY OF MERCHANTABILITY OR WARRANTY OF FITNESS FOR A PARTICULAR PURPOSE. The sole and exclusive remedy of Purchaser for any claim concerning this product, including, but not limited to, claims alleging breach of warranty, negligence, strict liability or otherwise, is the replacement of product or refund of the purchase price, at the sole option of Watson Bowman Acme. Any claims concerning this product shall be submitted in writing within one year of the delivery date of this product to Purchaser and any claims not presented within that period are waived by Purchaser. IN NO EVENT SHALL WATSON BOWMAN ACME BE LIABLE FOR ANY SPECIAL, INCIDENTAL, CONSEQUENTIAL (INCLUDES LOSS OF PROFITS) OR PUNITIVE DAMAGES. Other warranties may be available when the product is installed by a factory trained installer. Contact your local Watson Bowman Acme representative for details. The data expressed herein is true and accurate to the best of our knowledge at the time published; it is, however, subject to change without notice.

**Wabo®QuakeWall\_01-17**