



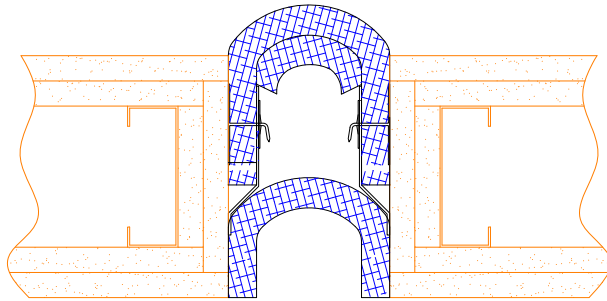
# Installation Procedure

Watson Bowman Acme Corp. 95 Pineview Drive Amherst, NY 14228

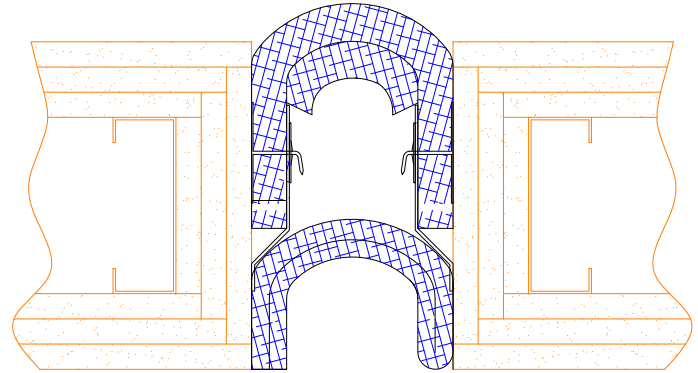
phone: (716) 691-7566 fax: (716) 691-9239

website: [www.wbacorp.com](http://www.wbacorp.com)

Information provided herein, including but not limited to, any drawing, design, photograph, graphic, or statement(s) ("Materials") are proprietary and the property of Watson Bowman Acme Corporation ("Company"). Reproduction, translation, or reduction to any electronic medium or machine readable form, in whole or part, is strictly prohibited, except for the express purpose for which it has been furnished, without prior written consent of Company. All Materials contained herein are provided by Company for information purposes only. Company reserves the right to amend or withdraw any information contained in the Materials without notice. All technical or other advice by Company, whether verbal or written, concerning products, or the use of products in specific situations ("Advice") is given by Company and is used at the Users own risk.



**2" Joint Opening  
(2 hr Rating)**



**2" Joint Opening  
(3 hr Rating)**

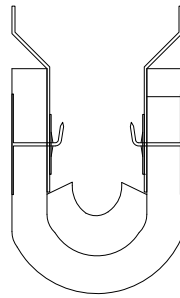
## **Wabo® FlameGuard II - Life Safety Series Model(s) "VFG" & "VFG Corner" 2" Opening Vertical Fire Barrier Systems**

The following installation procedure is very important and must be fully understood prior to beginning any work. To ensure proper installation and performance of expansion joint system the following actions must be completed by the installing contractor. Failure to do so will affect product warranty and fire barrier performance.

- 1) Carefully read and understand installation procedure. Contact WBA's Technical Service Department at (800) 677-4922 for product assistance.
- 2) Inspect all shipments and materials for missing or damaged components and hardware. Contact Customer Service at (800) 677-4922 with WBA's order number and invoice for prompt assistance.
- 3) Inspect substrate or adjacent construction for acceptance before beginning work. Report unacceptable construction to the project manager for scheduled repair work.
- 4) Review WBA shop drawings for project specific detailed information if Engineering services were purchased at time of order.

# Standard Components For Vertical Condition

Sheet  
**1**  
of 5

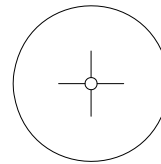


Flameguard II 2" Wall Assembly  
(For size and p/n refer to chart)  
Corner Conditions Utilize Same Components

Model #	P/n: 2 hr	P/n: 3 hr
VFG-202	VFG202	-
VFG-203	-	VFG203



Hilti CFS-S SIL GG Sealant  
Part Number - #2861

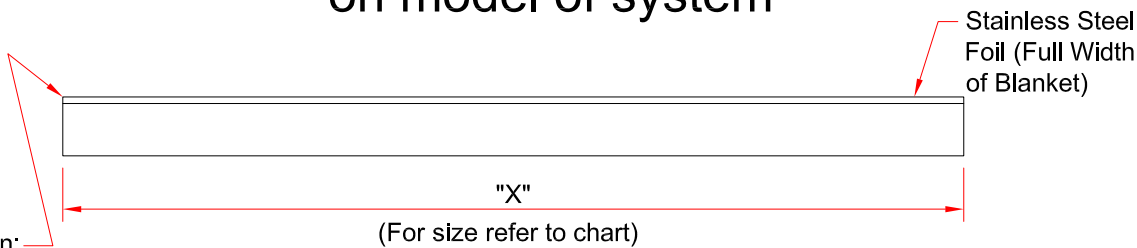


1 3/16" Dia Speed Washer  
Part Number -

Watson Bowman Acme Corp.  
95 Pineview Drive Amherst, NY 14228  
phone: (716) 691-7566 fax: (716) 691-9239  
website: [www.wbacorp.com](http://www.wbacorp.com)

Installation procedure: VFG FlameGuard II system  
Watson Bowman Acme Corp. reserves the right to amend or withdraw any information contained herein without notice and will not be responsible for any inaccuracy or ambiguity of any information contained herein.

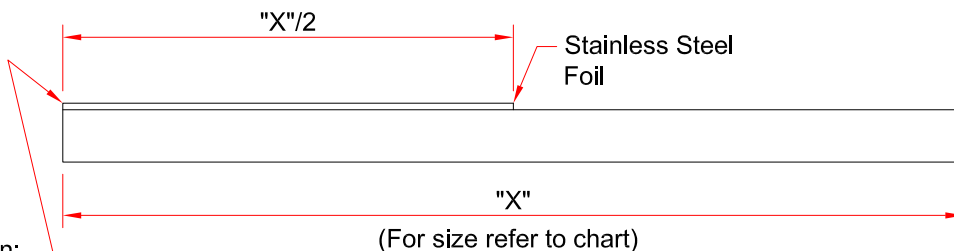
Components shown below vary in size depending  
on model of system



Caution:  
Sharp Edges.  
use gloves when  
handling.

Model #	"X"
VFG-202	6"

Layer "A" Fire Blanket - (2 Hr)



Caution:  
Sharp Edges.  
use gloves when  
handling.

Model #	"X"
VFG-203	12"

Layer "A" Fire Blanket - (3 Hr)



# Installation Procedure

Sheet

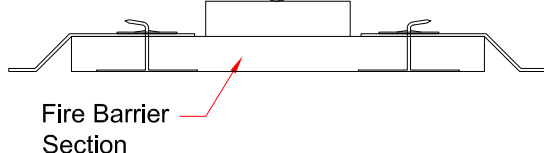
2  
of 5

Watson Bowman Acme Corp.  
95 Pineview Drive Amherst, NY 14228  
phone: (716) 691-7566 fax: (716) 691-9239  
website: [www.wbacorp.com](http://www.wbacorp.com)

Installation procedure: VFG FlameGuard II system  
Watson Bowman Acme Corp. reserves the right to amend or withdraw any information contained herein without notice and will not be responsible for any inaccuracy or ambiguity of any information contained herein.



Round Tubing  
(Apply slight down pressure  
while folding fire barrier blanket)



Fire Barrier  
Section

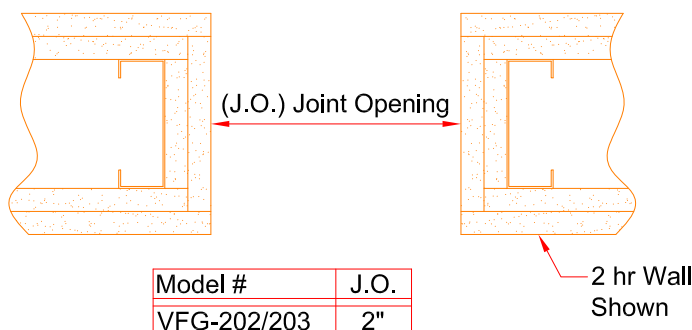
**Before Fold**

Round Tubing

Fire Barrier  
Section

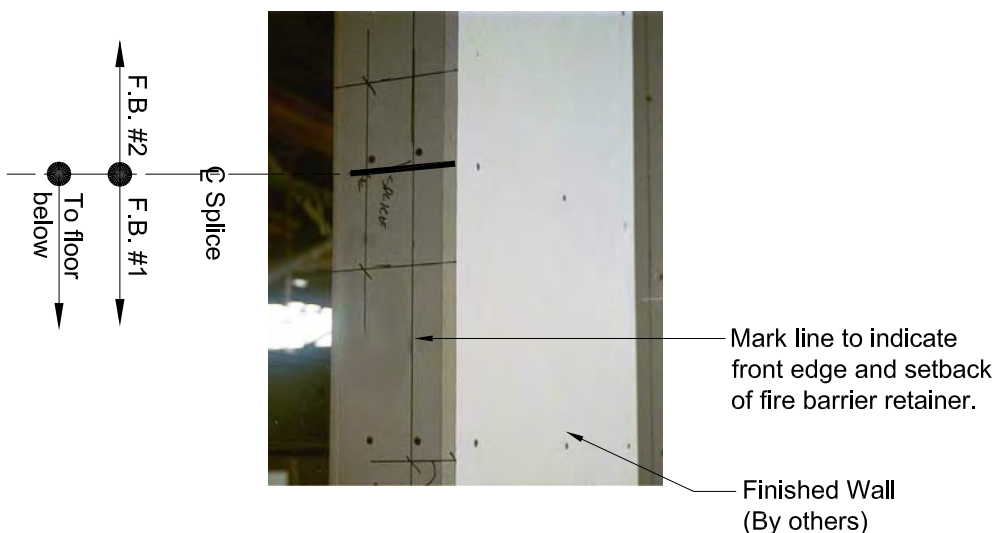
**After Fold**

**1** Prior to installation utilize a round tube to place a crease in the fire barrier's Mid-Section. Exercise care not to damage or puncture fire barrier blanket. This step will assist in folding and installing fire barrier into joint opening.

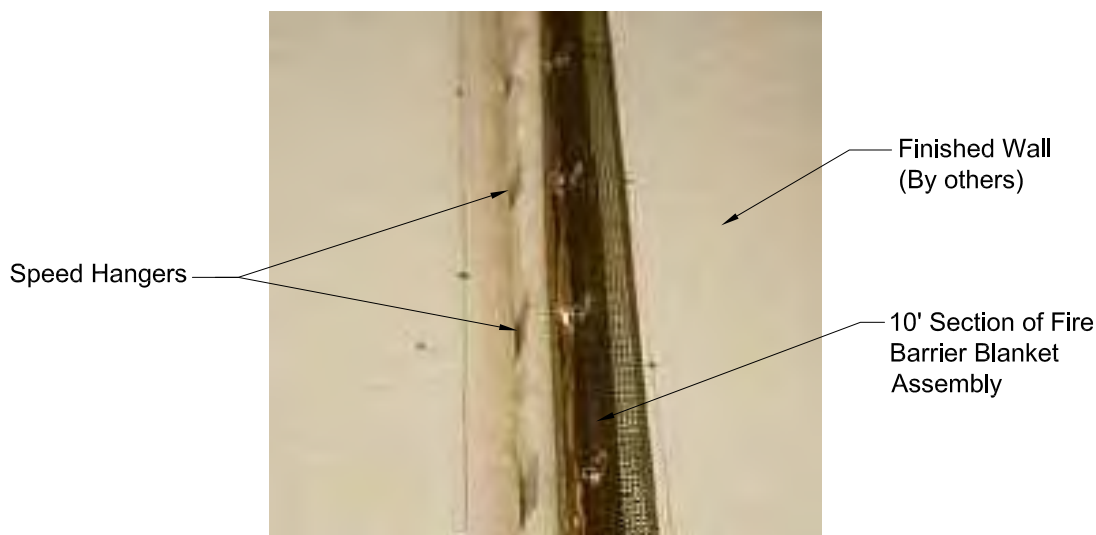


2 hr Wall  
Shown

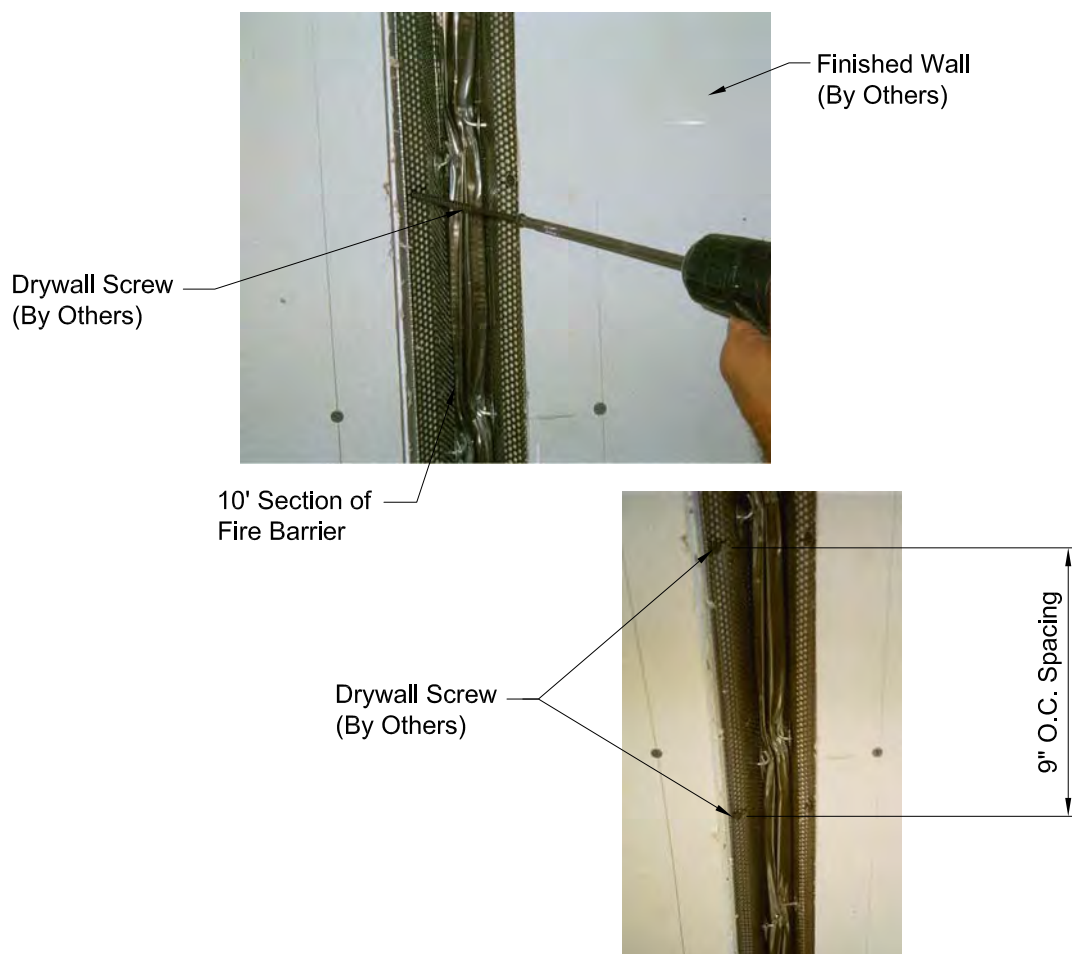
**2** Prior to beginning work, installer shall inspect for proper wall construction. Verify joint opening is as called for on chart.



**3** Mark splice line and setback of fire barrier retainer location as per WBA Shop Drawings.



- 4** Prior to inserting fire barrier assemblies into opening, utilizing a permanent marker mark lines at 9" O.C. on the metal retainer for locations of drywall screws. After retainers have been marked, fold fire barrier blanket assembly and slowly slide it into place inside the opening to the correct depth stated on WBA Shop Drawings. While inserting into joint opening exercise care not to catch speed hangers on face off wall, this can cause the speed hangers to tear fire barrier blanket at speed hanger locations.

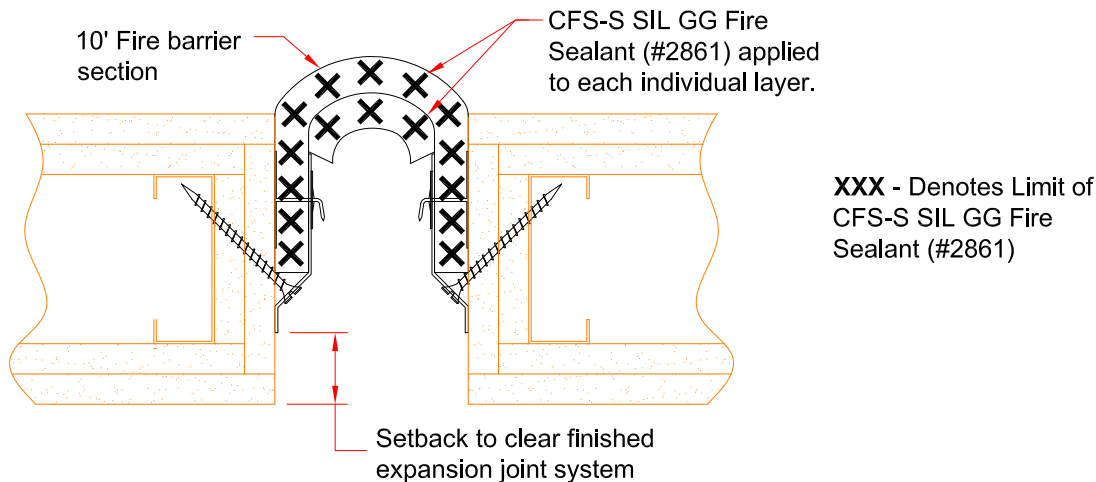


After inserting sections of fire barrier into opening, installation of drywall screws may begin at loactions marked on metal retainer.

**4A**

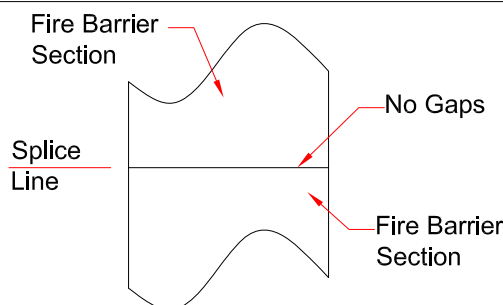
**Notes:**

1. If job conditions permit, manufacturer recommends to utilize wood blocking during installation of Fire Barrier to achieve tight contact between Fire Barrier blanket and adjacent wall surface.
2. Drywall screws supplied By Others. On larger systems proper length drywall screws are required to achieve proper engagement and anchor into studs.



**5**

After the first section of fire barrier has been installed, apply CFS-S SIL GG (#2861) sealant to all blanket layers as shown in diagram above.

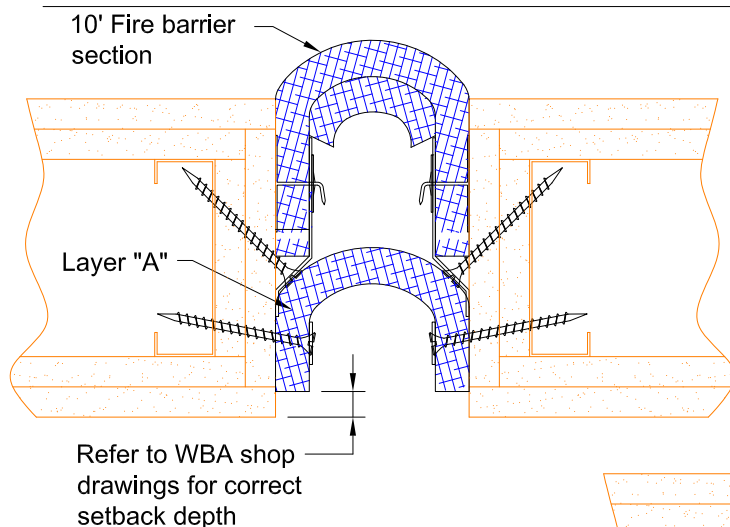


Repeat Step 4 with next section of fire barrier. Install next section ensuring that there are no gaps at the splice location between blankets, as shown above.

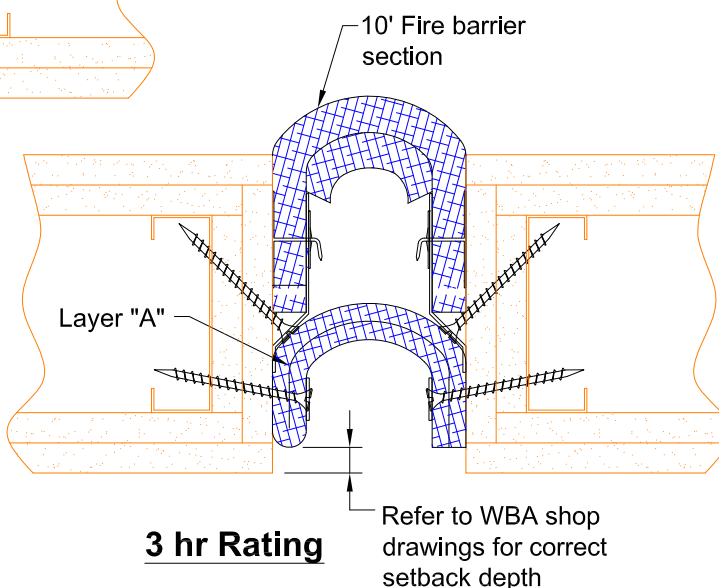
**6**

**Note:**

1. To remove small gaps between sections of fire barrier gently tap opposite ends of metal retainers toward splice line with a hammer and wood blocking compressing the CFS-S SIL GG (#2861) sealant at the splice line. Exercise care not to damage fire barrier blanket where wood blocking is applied.



**2 hr Rating**

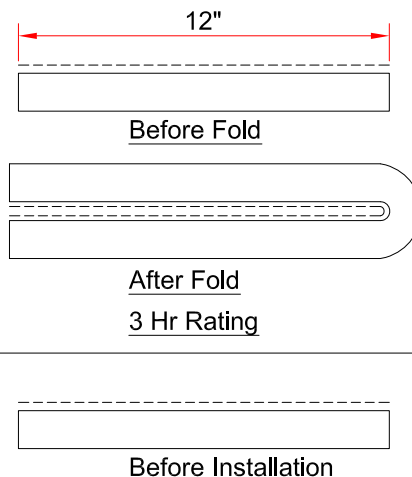
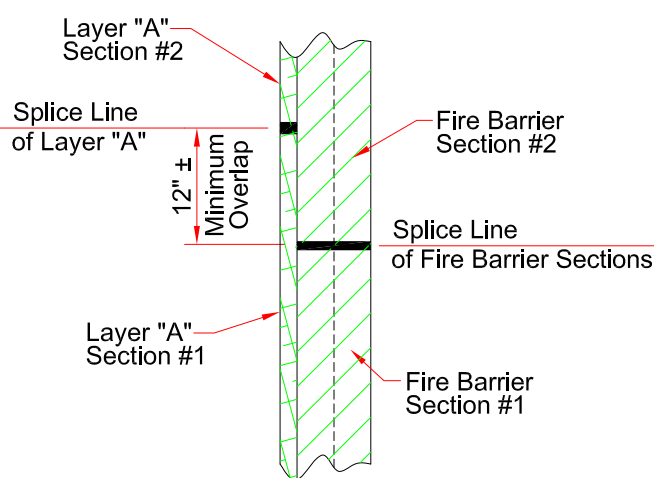


**3 hr Rating**

**7**

Continued on Next page



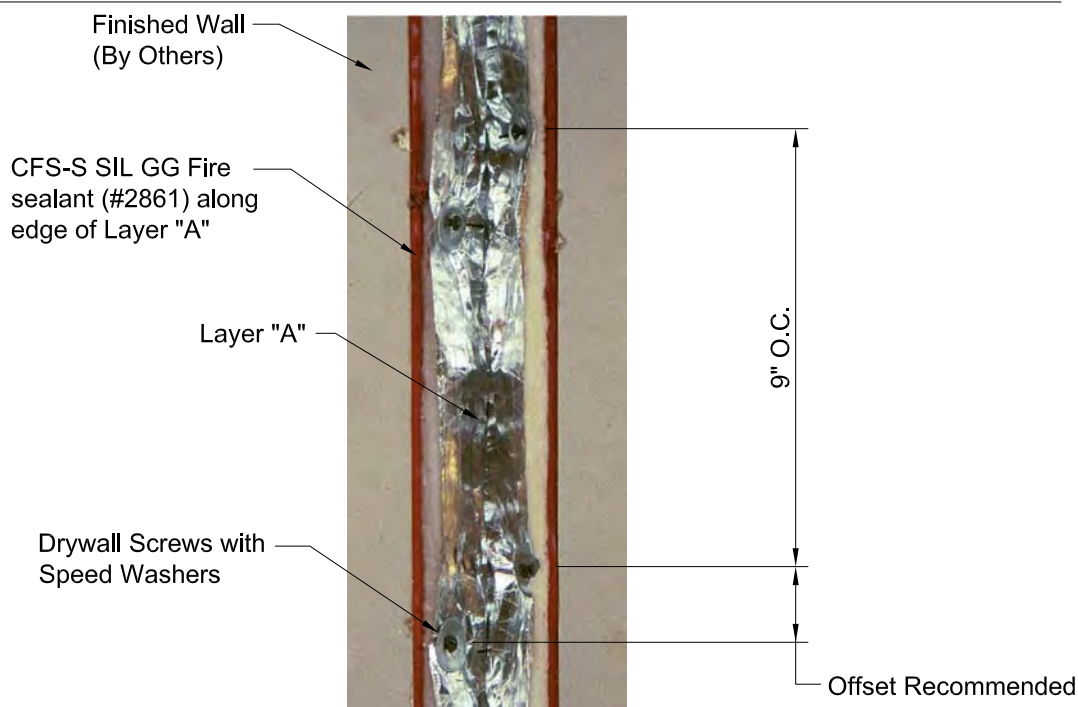


## Splice Line Offset Requirements

Once all vertical sections have been installed, proceed with installation of Layer "A".

### Notes:

7. 1. Fold Layer "A" as shown above prior to installing. Align Layer "A" edge of blanket flush with setback depth shown on WBA's Shop Drawings. Once blanket depth is set, utilizing drywall screws (By Others) and speed washers supplied fasten Layer "A" adjacent wall surface. Do not over compress blanket when installing drywall screws and speed washers. After one side has been fastened, repeat procedure for other side.
2. At splice lines for layer "A" apply a layer of CFS-S SIL GG (#2861) sealant at the splice location.



8. After layer "A" has been installed apply a bead of CFS-S SIL GG (#2861) sealant along edges of layer "A" and wall opening as shown. This is to insure that there is no gapping between the fire barrier and wall opening.

9. Fire barrier installation for corner condition is typical to procedure shown above. Actual Fire Barrier system and components remain unchanged.

10. With installation complete protect fire barrier from other work. It shall be the installers responsibility to protect completed fire barrier installations. Damaged Fire Barriers will be replaced at installers expense.