



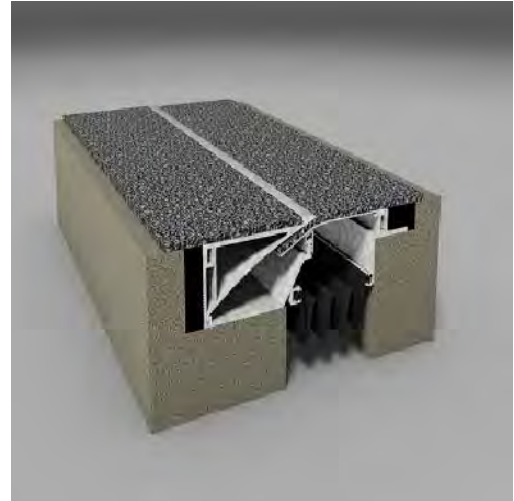
Installation Procedure

Watson Bowman Acme Corp. 95 Pineview Drive Amherst, NY 14228

phone: (716) 691-7566 fax: (716) 691-9239

website: www.wbacorp.com

Information provided herein, including but not limited to, any drawing, design, photograph, graphic, or statement(s) ("Materials") are proprietary and the property of Watson Bowman Acme Corporation ("Company"). Reproduction, translation, or reduction to any electronic medium or machine readable form, in whole or part, is strictly prohibited, except for the express purpose for which it has been furnished, without prior written consent of Company. All Materials contained herein are provided by Company for information purposes only. Company reserves the right to amend or withdraw any information contained in the Materials without notice. All technical or other advice by Company, whether verbal or written, concerning products, or the use of products in specific situations ("Advice") is given by Company and is used at the Users own risk.



Wabo® Allure Model(s) "AFJ" & "AFJ Corner" 100-400 Horizontal Expansion Control Systems

The following installation procedure is very important and must be fully understood prior to beginning any work. To ensure proper installation and performance of expansion joint system the following actions must be completed by the installing contractor. Failure to do so will affect product warranty.

- 1) Carefully read and understand installation procedure. Contact WBA's Technical Service Department at (800) 677-4922 for product assistance.
- 2) Inspect all shipments and materials for missing or damaged components and hardware. Contact Customer Service at (800) 677-4922 with WBA's order number and invoice for prompt assistance.
- 3) Inspect substrate or adjacent construction for acceptance before beginning work. Report unacceptable construction to the project manager for scheduled repair work.
- 4) Review WBA shop drawings for project specific detailed information if Engineering services were purchased at time of order.

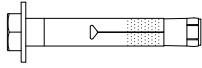
Standard Components For Floor Condition



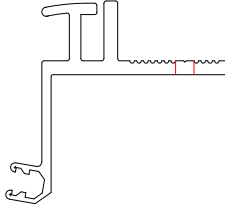
1/4" X 5/8" Csk Flathead Machine Screw
Part Number - 5620



Aluminum Adjustable Spring Support
Part Number - 17035



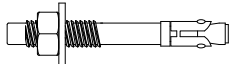
3/8" X 2-1/4" Anchor
Part Number - 6514



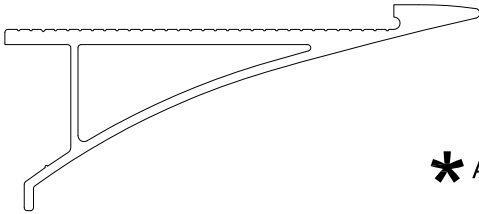
Aluminum Floor Leaf Mount Extrusion
Part Number - 18120



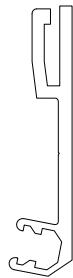
Prima-Lub
Part Number - 2720



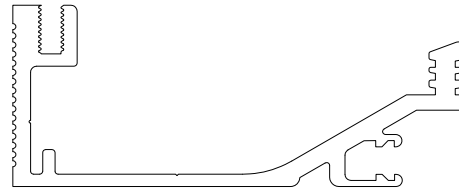
* 1/4" X 2-1/4" Anchor
Part Number - 6581



Aluminum Exposed Trim Surface
Part Number - 17048



* Aluminum Wall Mount
Leaf Extrusion
Part Number - 18044



Aluminum Base Support
Part Number - 18049

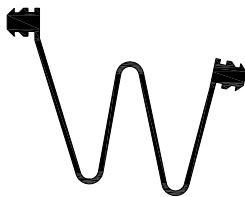


Spring Steel Leaf Spring
Part Number - 17009



* Spring Steel Leaf Spring
Part Number - 17011

Components shown below vary in size depending
on model of system



Moisture Barrier
Part Number - 1181

* Components required for corner condition installation.

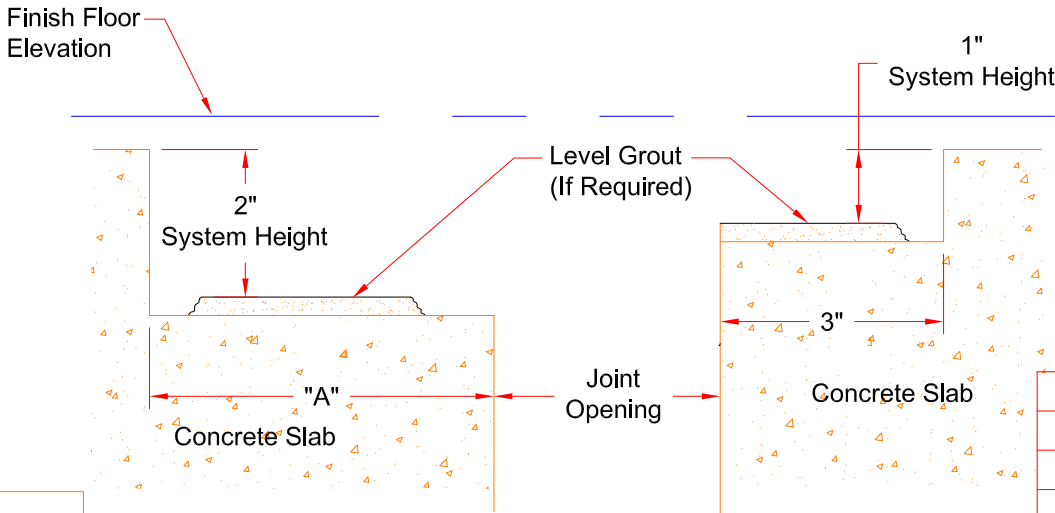
Watson Bowman Acme Corp.
95 Pineview Drive Amherst, NY 14228
phone: (716) 691-7566 fax: (716) 691-9239
website: www.wbacorp.com

Installation procedure: AFJ Allure system

Watson Bowman Acme Corp. reserves the right to amend or withdraw any information contained herein without notice and will not be responsible for any inaccuracy or ambiguity of any information contained herein.

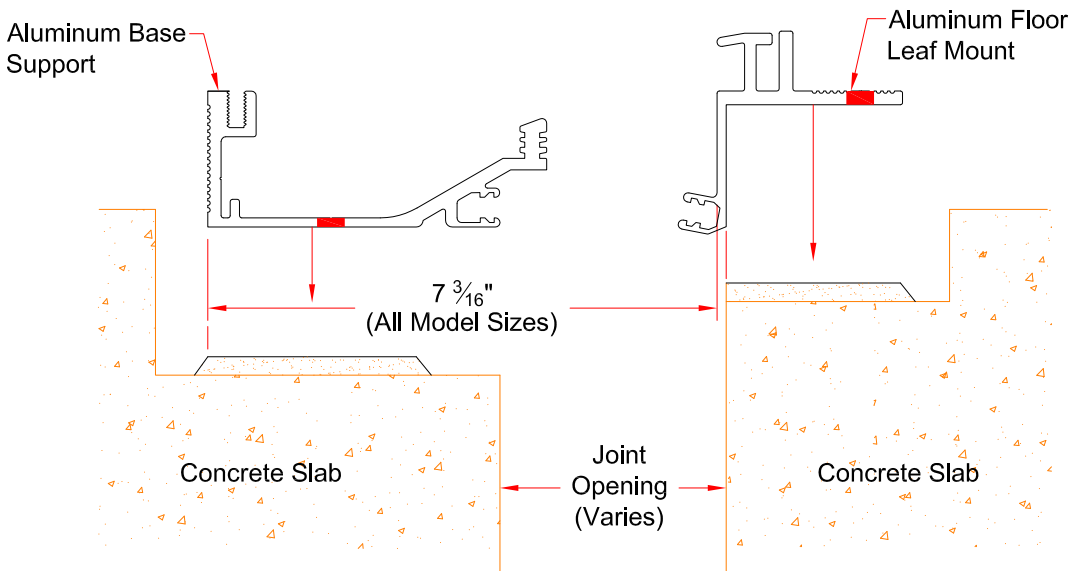


Installation Procedure



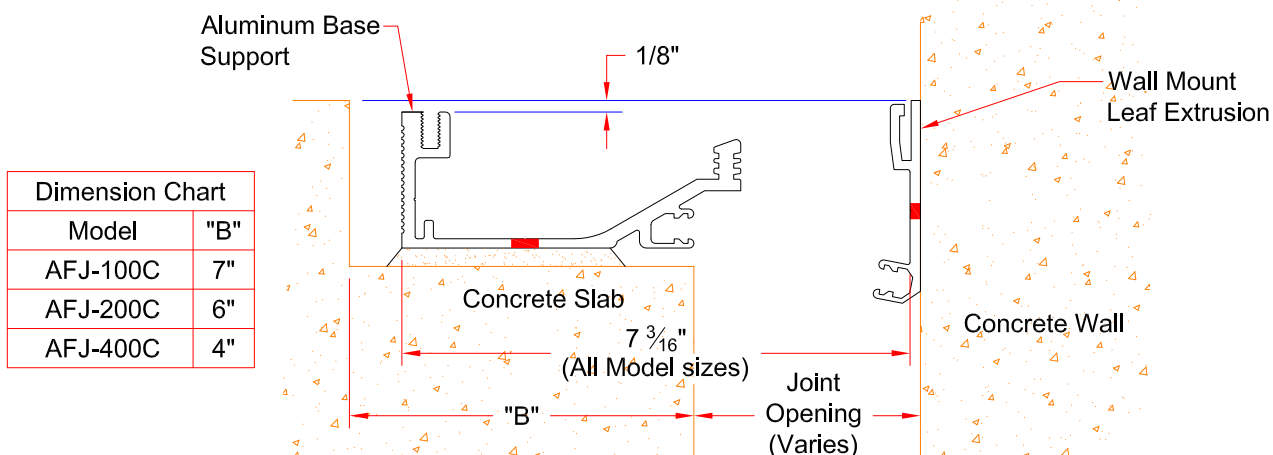
Dimension Chart	
Model	"A"
AFJ-100	7"
AFJ-200	6"
AFJ-400	4"

1 Prepare concrete block out for installation of expansion joint. Variations in block out dimensions must be corrected prior to beginning work.



2 **Floor** - Position Aluminum base support and Aluminum floor leaf mount extrusion on block out as shown. Mark anchor locations.
Note: Aluminum base support and Aluminum Floor leaf mount must have **FULL BEARING** on grout or slab.

(Corner Condition)



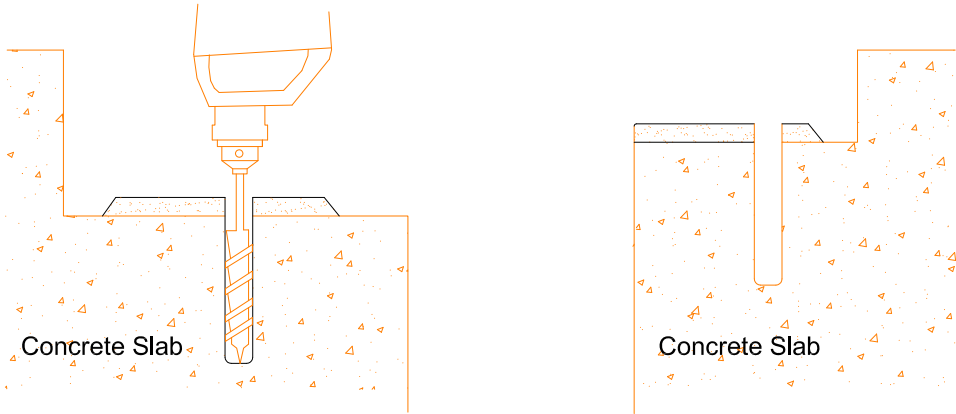
Dimension Chart	
Model	"B"
AFJ-100C	7"
AFJ-200C	6"
AFJ-400C	4"

2A **Corner** - Align top of wall leaf mount extrusion 1/8" above top of Aluminum base member as shown. Mark anchor locations.
Note: Aluminum base support and Aluminum Floor leaf mount must have **FULL BEARING** on grout or slab.

Watson Bowman Acme Corp.
95 Pineview Drive Amherst, NY 14228
phone: (716) 691-7566 fax: (716) 691-9239
website: www.wbacorp.com

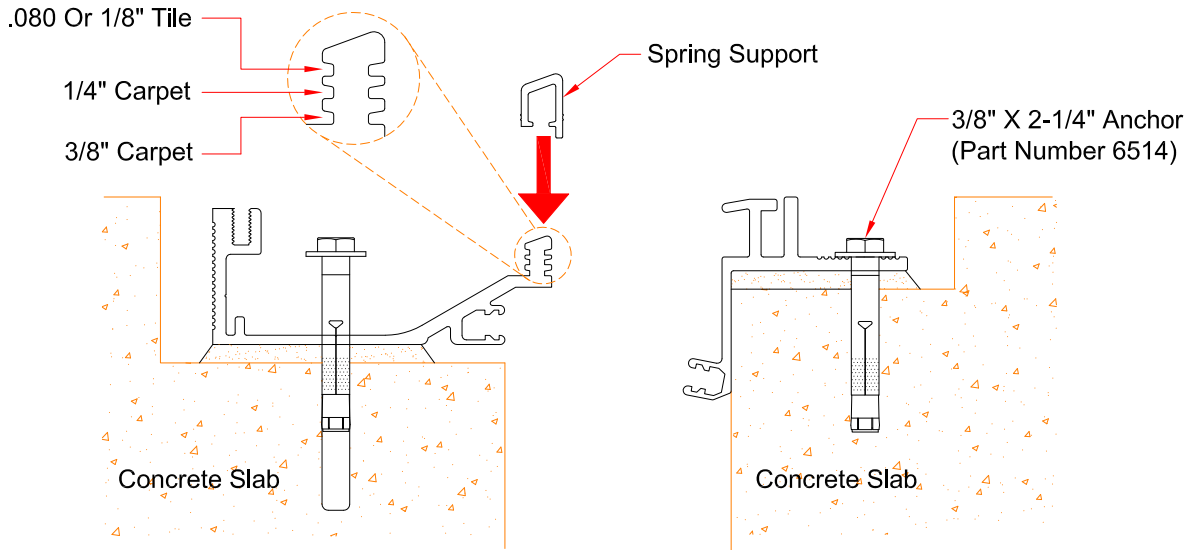
Installation procedure: AFJ Allure system
Watson Bowman Acme Corp. reserves the right to amend or withdraw any information contained herein without notice and will not be responsible for any inaccuracy or ambiguity of any information contained herein.





3

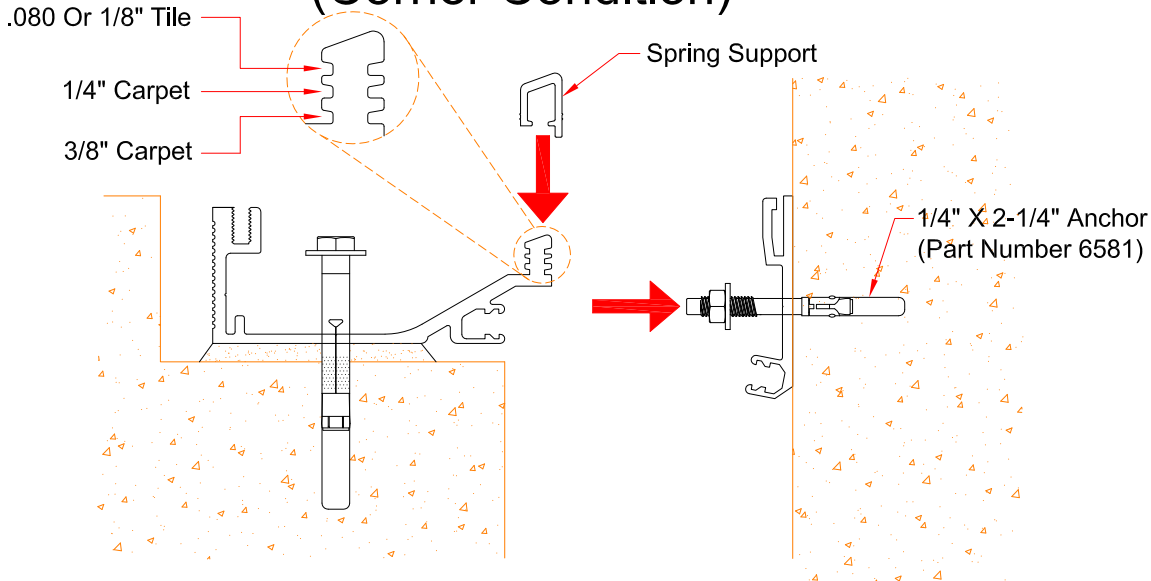
Drill holes for 3/8" x 2-1/4" anchor to proper depth. Clean out holes.



4

Floor - Slide spring support into proper slot of Aluminum base member. Adjust it according to the detail above depending on floor covering being used. Then utilizing manufacturers anchors , mount and secure Aluminum base Extrusion and Aluminum Floor Leaf Mount Extrusion to Concrete Slab.

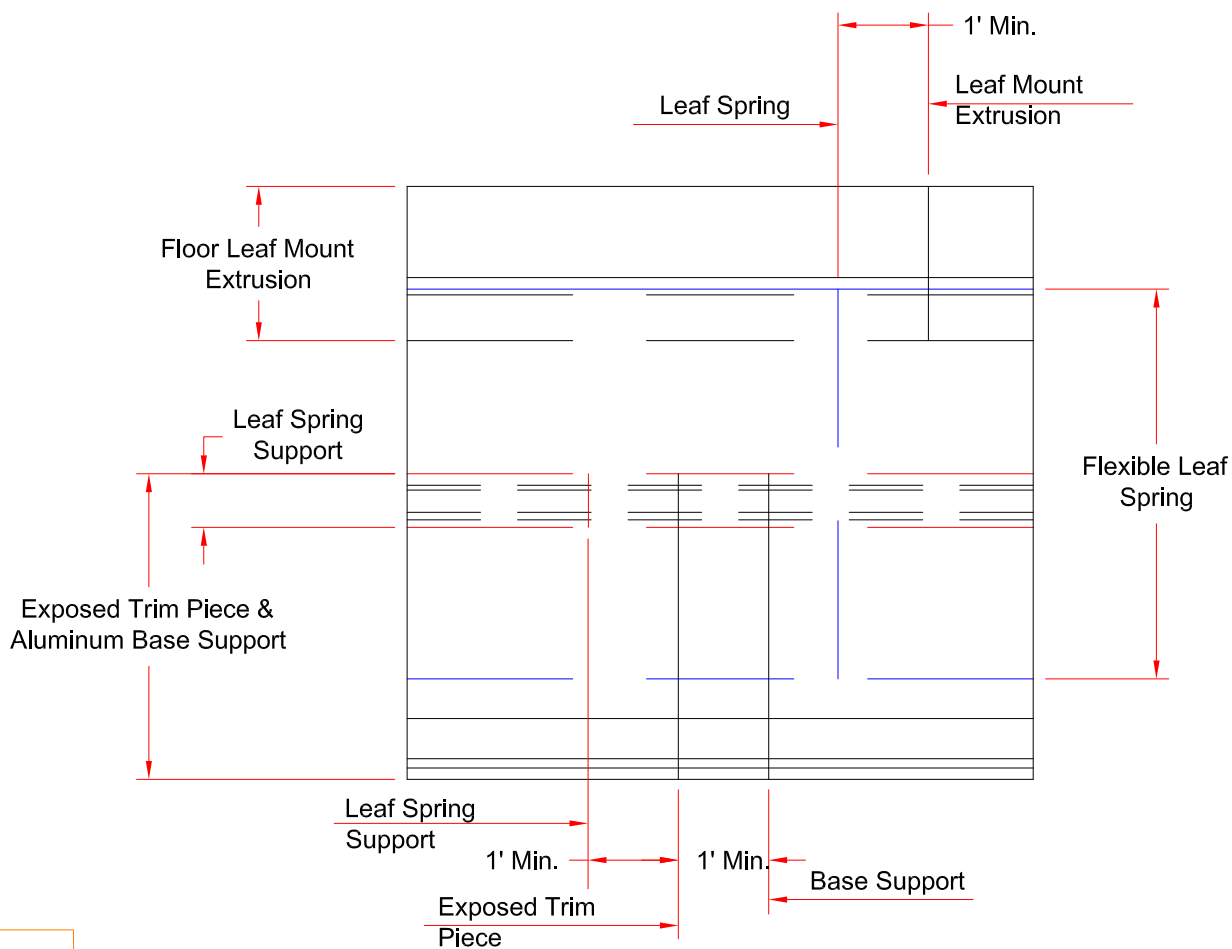
(Corner Condition)



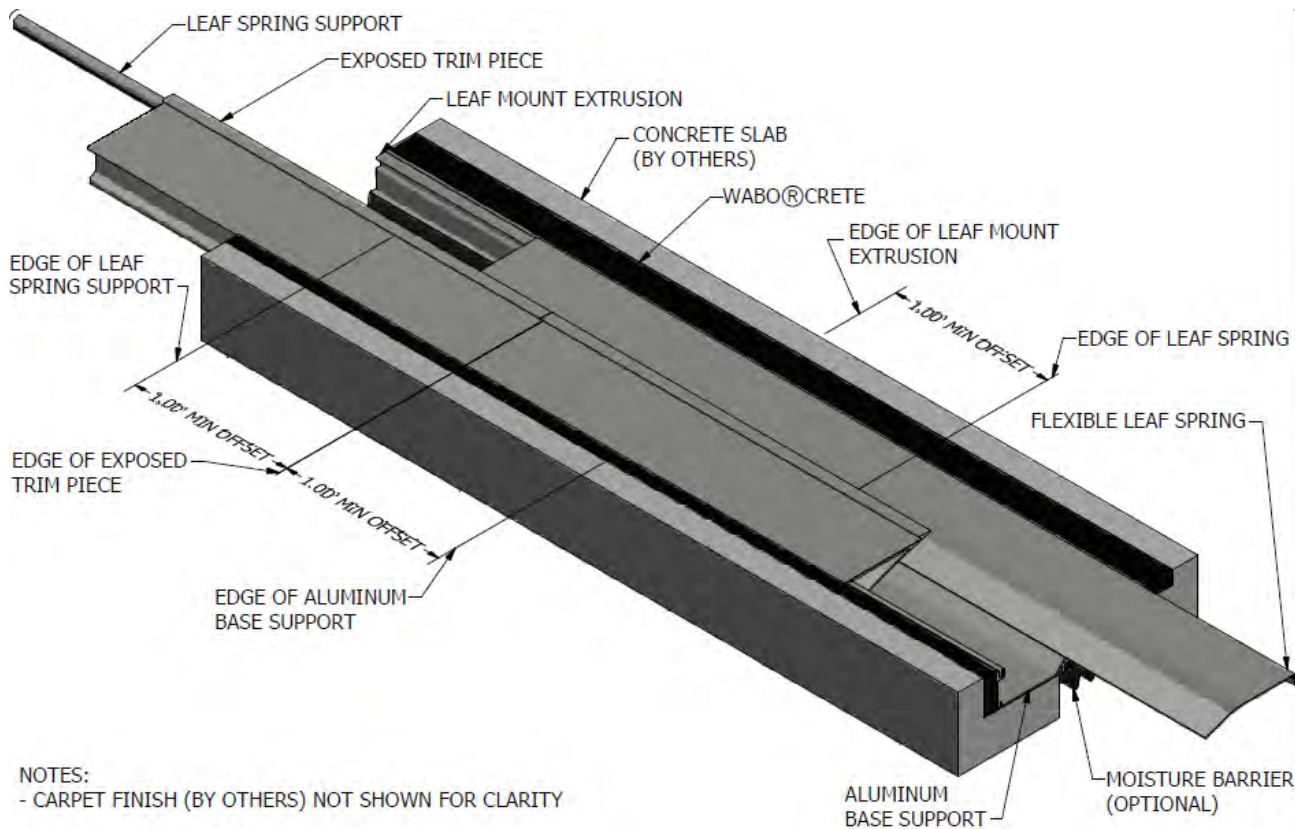
4A

Corner - Slide spring support into proper slot of Aluminum base member. Adjust it according to the detail above depending on floor covering being used. Then utilizing manufacturers anchors , mount and secure Aluminum base Extrusion and Aluminum Floor Leaf Mount Extrusion to Concrete Slab.

Installation procedure: AFJ Allure system
Watson Bowman Acme Corp. reserves the right to amend or withdraw any information contained herein without notice and will not be responsible for any inaccuracy or ambiguity of any information contained herein.



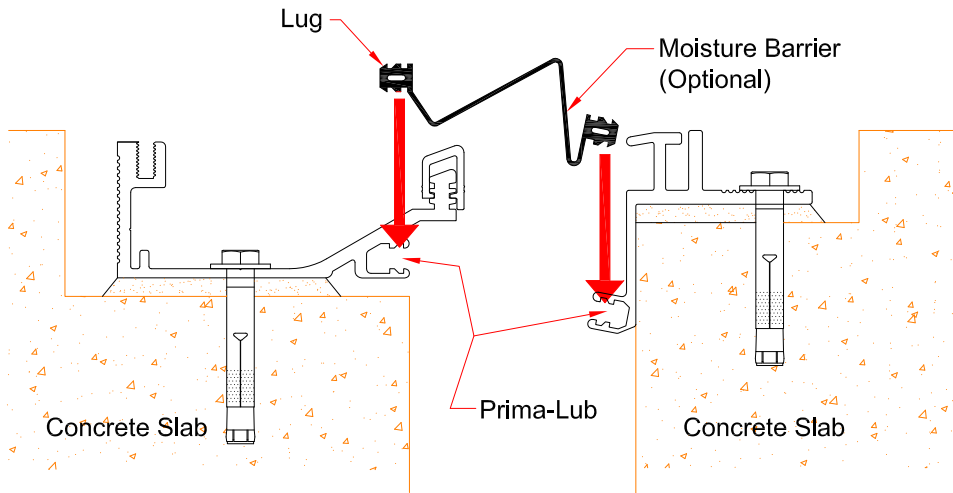
5 Stagger all splices in accordance with detail illustrated above to provide a stronger assembly and durable installation.



NOTES:
- CARPET FINISH (BY OTHERS) NOT SHOWN FOR CLARITY

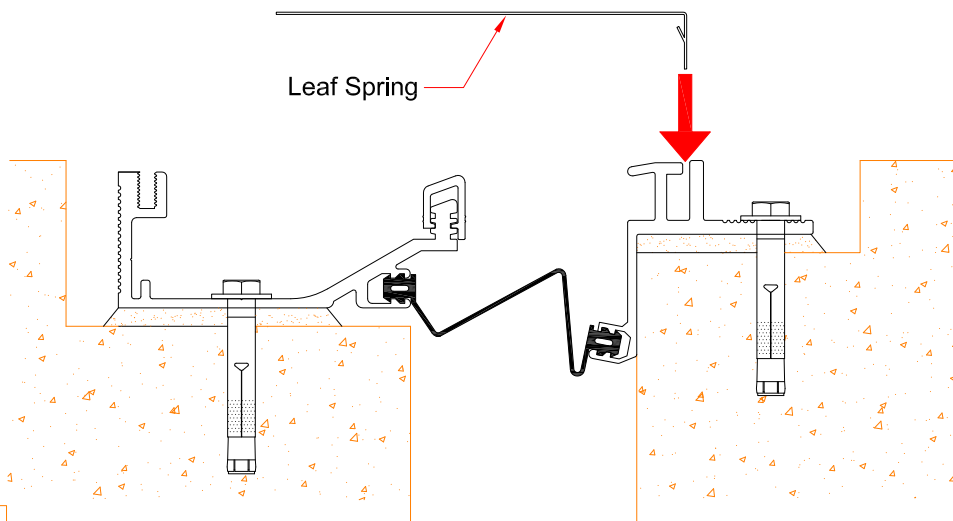
5a Stagger all splices in accordance with detail illustrated above to provide a stronger assembly and durable installation (example #2).





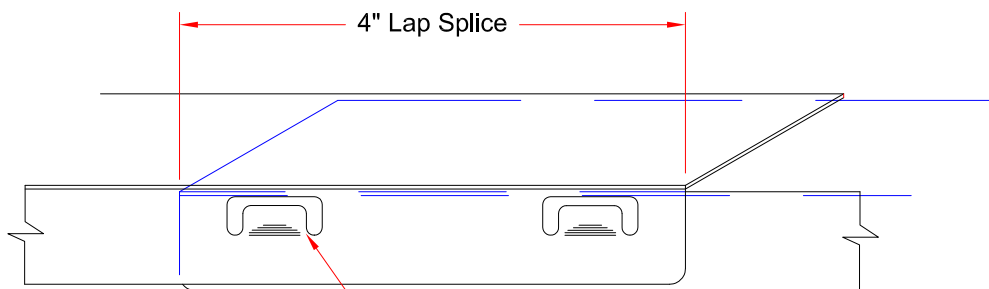
6

(Optional)
Brush apply prima-lub adhesive into extrusion cavity and install moisture barrier exercising care not to damage moisture barrier, ensure full engagement of locking lug.



7

- Snap leaf spring into leaf mount extrusion. Ensure top surface of leaf mount extrusion is flush with top surface of leaf spring.

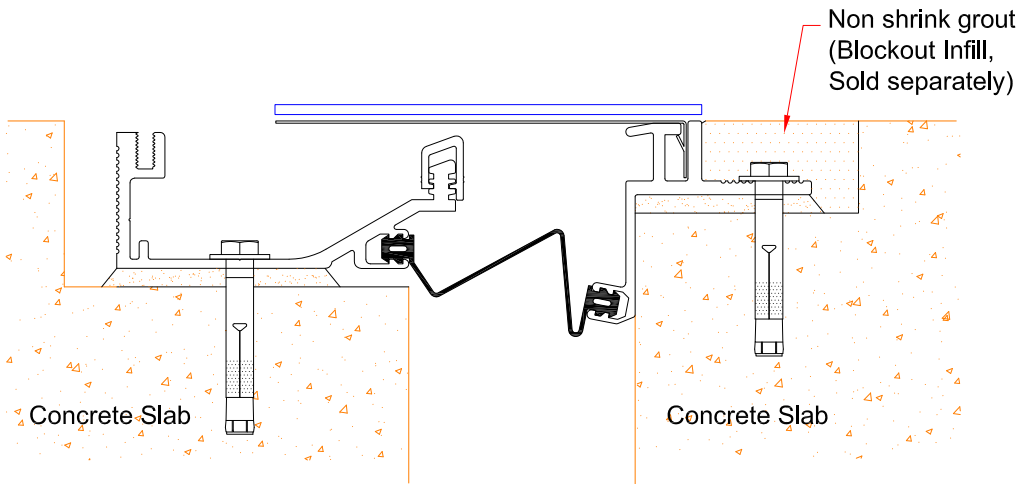


8

- Stagger all splices in accordance with detail illustrated above to provide a stronger assembly and durable installation.

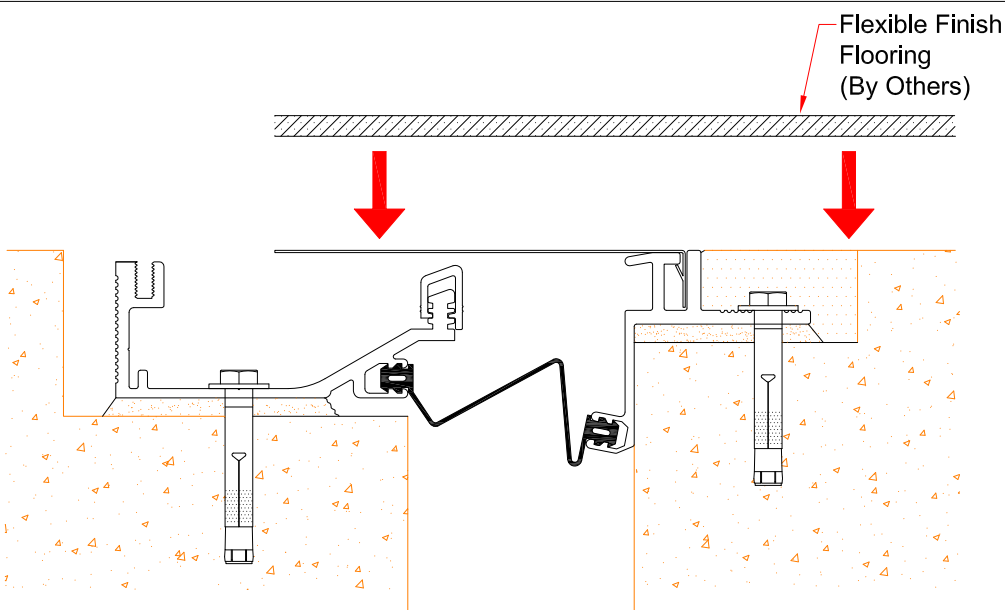
Installation procedure: AFJ Allure system
Watson Bowman Acme Corp. reserves the right to amend or withdraw any information contained herein without notice and will not be responsible for any inaccuracy or ambiguity of any information contained herein.





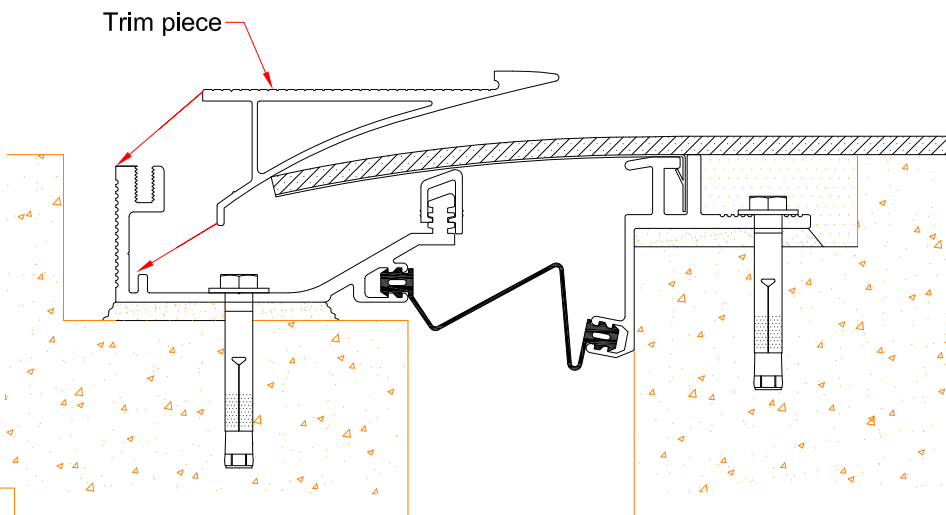
9

Install non shrink grout into blockout on Leaf Spring Side after Leaf Spring and anchors have been installed.
Note: Protect surfaces during placement of blockout infill.



10

Install flooring material on leaf spring side **ONLY**.
Note: Follow flooring manufacturers application procedures for proper installation of flooring material. Prepare leaf spring for carpet tape or adhesive as recommended by flooring manufacturer.



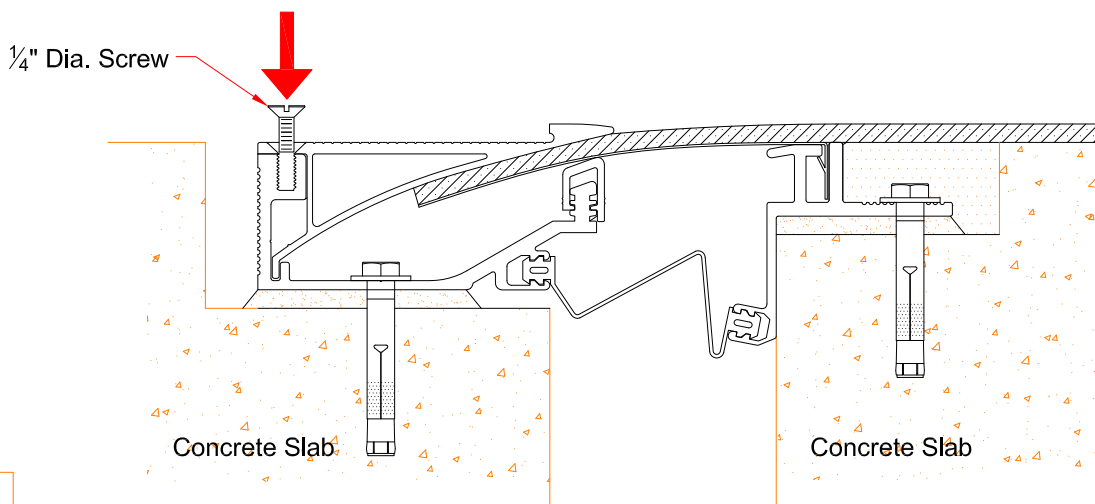
11

Slide trim piece into place, pushing down on the leaf spring as shown.

Installation procedure: AFJ Allure system

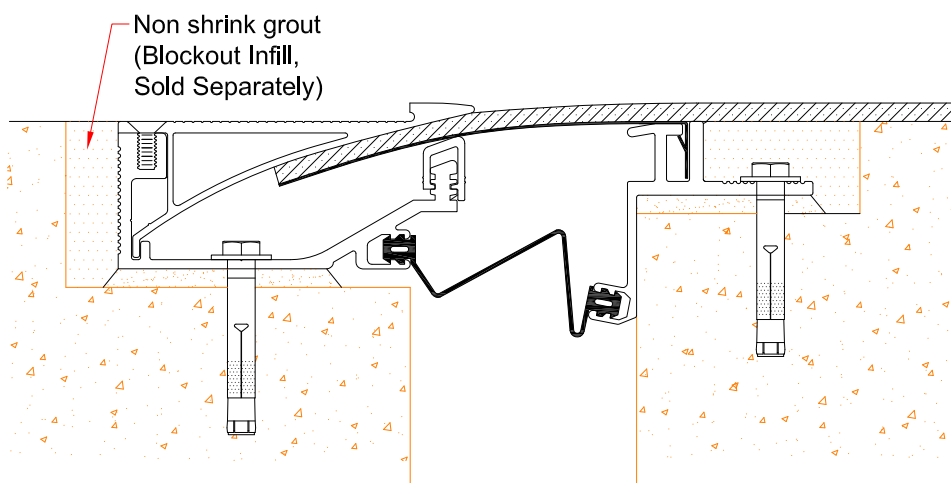
Watson Bowman Acme Corp. reserves the right to amend or withdraw any information contained herein without notice and will not be responsible for any inaccuracy or ambiguity of any information contained herein.





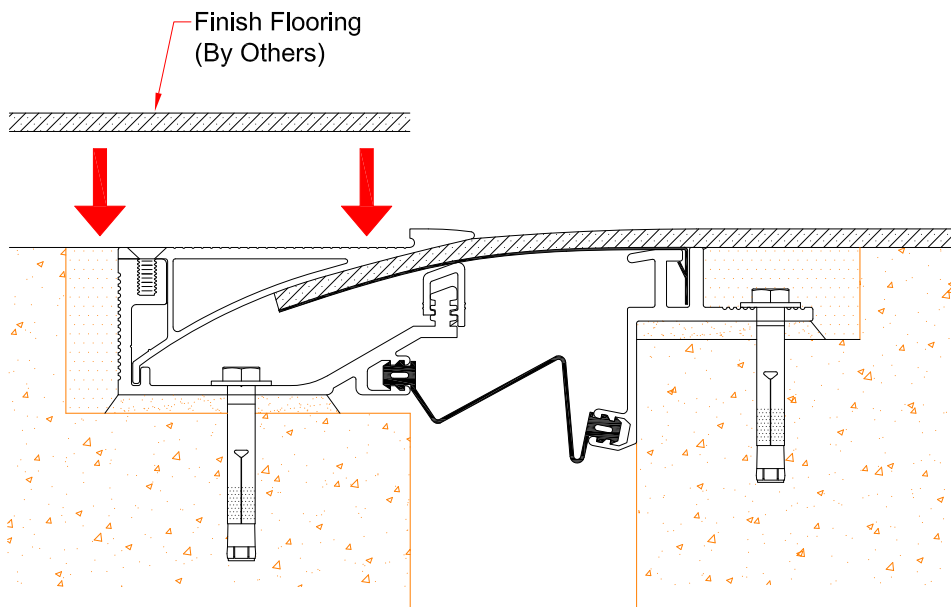
12

Maintain pressure on trim piece. Fasten trim piece to base extrusion utilizing 1/4" dia csk machine screw until flush with surface.



13

Install non shrink grout into blockout on the base support side.
Note: Protect surfaces during placement of blockout infill.



14

Finish installing flooring material on trim piece, following flooring manufacturers application procedures for proper installation of flooring material.

Installation procedure: AFJ Allure system
Watson Bowman Acme Corp. reserves the right to amend or withdraw any information contained herein without notice and will not be responsible for any inaccuracy or ambiguity of any information contained herein.

