



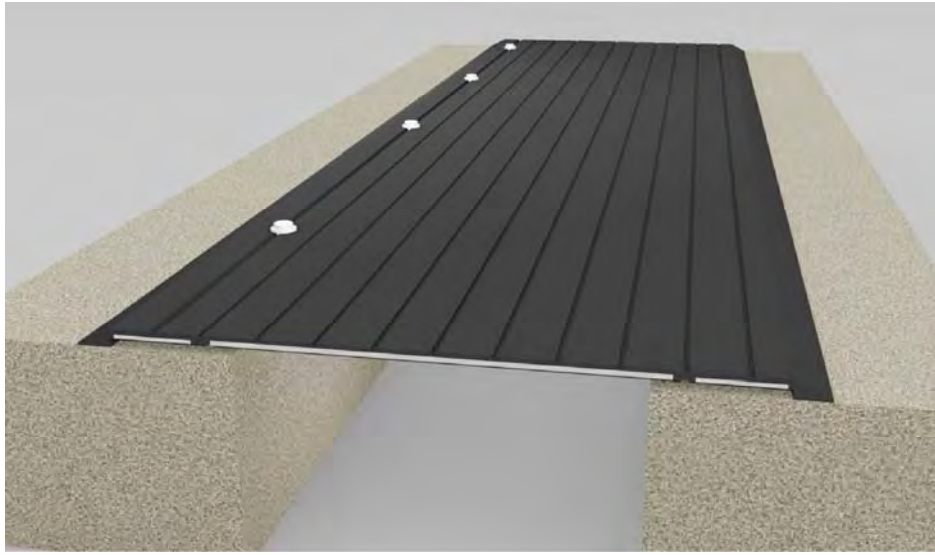
# Installation Procedure

Watson Bowman Acme Corp. 95 Pineview Drive Amherst, NY 14228

phone: (716) 691-7566 fax: (716) 691-9239

website: [www.wbcorp.com](http://www.wbcorp.com)

Information provided herein, including but not limited to, any drawing, design, photograph, graphic, or statement(s) ("Materials") are proprietary and the property of Watson Bowman Acme Corporation ("Company"). Reproduction, translation, or reduction to any electronic medium or machine readable form, in whole or part, is strictly prohibited, except for the express purpose for which it has been furnished, without prior written consent of Company. All Materials contained herein are provided by Company for information purposes only. Company reserves the right to amend or withdraw any information contained in the Materials without notice. All technical or other advice by Company, whether verbal or written, concerning products, or the use of products in specific situations ("Advice") is given by Company and is used at the Users own risk.



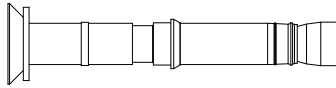
## Wabo® SafetyFlex Parking Garage Series Model(s) "SFP" Horizontal Expansion Control Systems

The following installation procedure is very important and must be fully understood prior to beginning any work. To ensure proper installation and performance of expansion joint system the following actions must be completed by the installing contractor. Failure to do so will affect product warranty.

- 1) Carefully read and understand installation procedure. Contact WBA's Technical Service Department at (800) 677-4922 for product assistance.
- 2) Inspect all shipments and materials for missing or damaged components and hardware. Contact Customer Service at (800) 677-4922 with WBA's order number and invoice for prompt assistance.
- 3) Inspect substrate or adjacent construction for acceptance before beginning work. Report unacceptable construction to the project manager for scheduled repair work.
- 4) Review WBA shop drawings for project specific detailed information if Engineering services were purchased at time of order.

# Standard components

Sheet  
**1**  
of 4



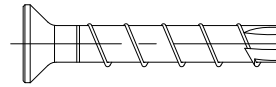
1/4" x 3 7/8" Lg Hilti HSL-3 SK 8/20  
H.D. Concrete Anchor  
(P/N #5717)

**\* California Kits Only \***

Or



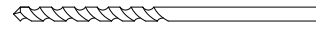
T-50 Torx  $\frac{3}{8}$ " Drive Bit Socket  
**\*\*BY OTHERS\*\***  
**(Not Included)**



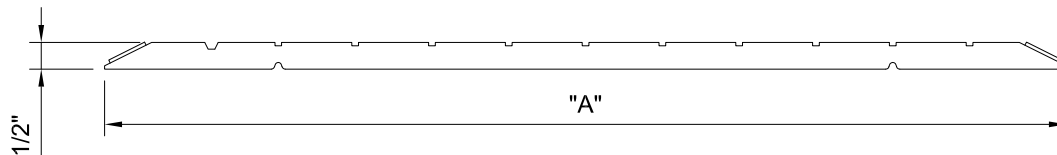
10mm x 70mm Lg. Hilti HUS3-C  
H.D. Concrete Screw  
(P/N #7801)

**Standard Hardware**

And

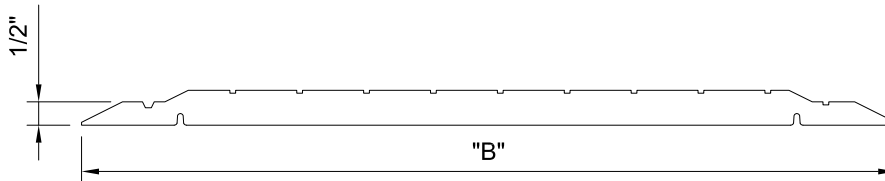


10mm Drill Bit (P/N #7805)  
**Standard Hardware**



| Model #          | P/N   | "A" dim. |
|------------------|-------|----------|
| SFP-600 - Black  | 19960 | 12"      |
| SFP-1000 - Black | 19954 | 18"      |

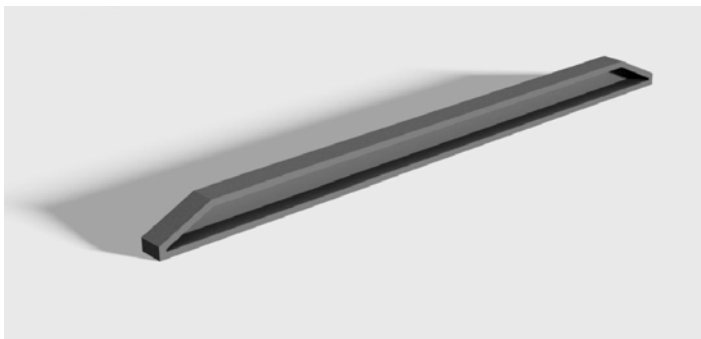
| Model #         | P/N   | "A" dim. |
|-----------------|-------|----------|
| SFP-600 - Grey  | 19961 | 12"      |
| SFP-1000 - Grey | 19955 | 18"      |



| Model #          | P/N   | "B" dim. |
|------------------|-------|----------|
| SFP-1200 - Black | 19980 | 17 1/2"  |
| SFP-1800 - Black | 19970 | 23 1/2"  |
| SFP-2400 - Black | 19990 | 29 3/4"  |
| SFP-3100 - Black | 19940 | 36 3/4"  |

| Model #         | P/N   | "B" dim. |
|-----------------|-------|----------|
| SFP-1200 - Grey | 19981 | 17 1/2"  |
| SFP-1800 - Grey | 19971 | 23 1/2"  |
| SFP-2400 - Grey | 19991 | 29 3/4"  |
| SFP-3100 - Grey | 19941 | 36 3/4"  |

Components shown below vary in size depending  
on model of system



| Model #          | P/N   |
|------------------|-------|
| SFP-600 - Black  | 19962 |
| SFP-1000 - Black | 19957 |
| SFP-1200 - Black | 19982 |
| SFP-1800 - Black | 19972 |
| SFP-2400 - Black | 19992 |
| SFP-3100 - Black | 19942 |

SafetyFlex End Cap  
(Refer to Chart for P/N)

| Model #         | P/N   |
|-----------------|-------|
| SFP-600 - Grey  | 19963 |
| SFP-1000 - Grey | 19958 |
| SFP-1200 - Grey | 19983 |
| SFP-1800 - Grey | 19973 |
| SFP-2400 - Grey | 19993 |
| SFP-3100 - Grey | 19943 |

Installation procedure: SafetyFlex system

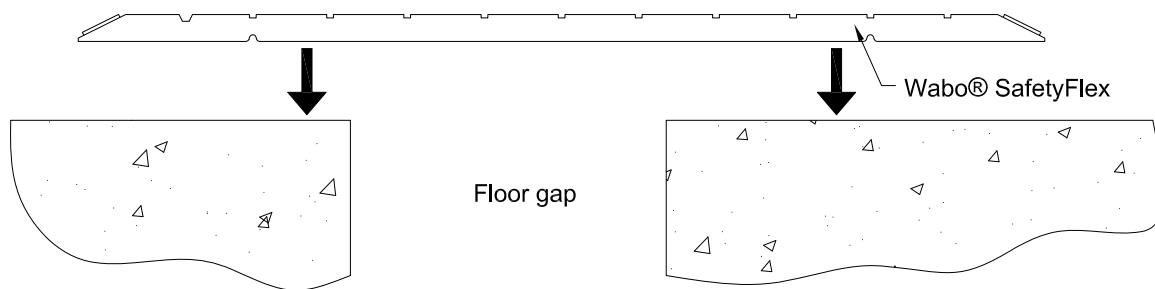
Information provided herein, including but not limited to, any drawing, design, photograph, graphic, or statement(s) ("Materials") are proprietary and the property of Watson Bowman Acme Corporation ("Company"). Reproduction, translation, or reduction to any electronic medium or machine readable form, in whole or part, is strictly prohibited, except for the express purpose for which it has been furnished, without prior written consent of Company. All Materials contained herein are provided by Company for informational purposes only. Company reserves the right to amend or withdraw any information contained in the Materials without notice. All technical or other advice by Company, whether verbal or written, concerning products, or the use of products in specific situations ("Advice") is given by Company and is used at the Users own risk.



Watson Bowman Acme Corp.  
95 Pineview Drive Amherst, NY 14228  
phone: (716) 691-7566 fax: (716) 691-9239  
website: www.wbacorp.com

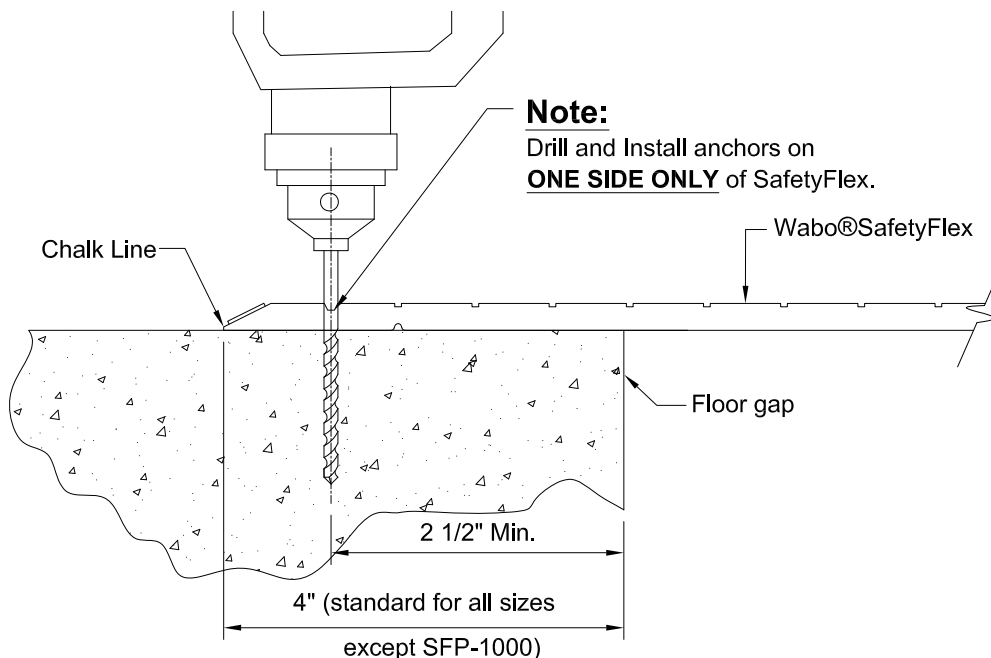
## Installation procedure: SafetyFlex system

Information provided herein, including but not limited to, any drawing, design, photograph, graphic, or statement(s) ("Materials") are proprietary and the property of Watson Bowman Acme Corporation ("Company"). Reproduction, translation, or reduction to any electronic medium or machine readable form, in whole or part, is strictly prohibited, except for the express purpose for which it has been furnished, without prior written consent of Company. All Materials contained herein are provided by Company for informational purposes only. Company reserves the right to amend or withdraw any information contained in the Materials at any time without notice. The Materials are provided as is, without warranty, expressed or implied, and the use of products in specific situations ("Advice") is given by Company and is used at the Users own risk.



**1**

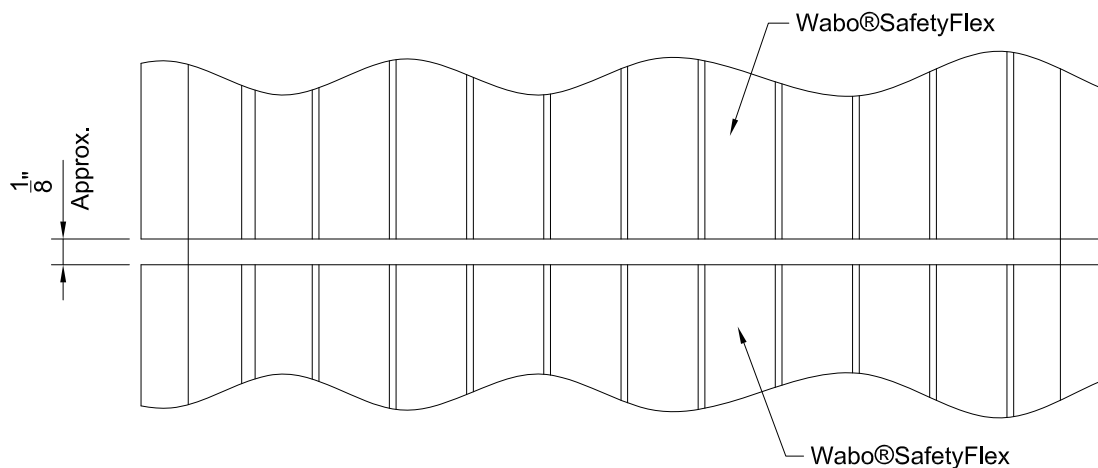
Make sure that the floor is level. High spots should be ground down and low spots filled in. If not able to level out joint opening fasten SafetyFlex along high Side of Opening. If installing more than one piece, lay out entire run to ensure proper alignment. If a section of SafetyFlex has been cut, apply a bead of sealant along the cut edge of SafetyFlex to help prevent the steel insert from rusting.



**2**

Drill end holes first. This ensures that the expansion joint will not move and alignment with other joints is obtained. Follow anchor manufacturer's recommendations for drilling operation. Drill Ø10mm holes to proper depth and clean out holes.

**Notes: Refer to Hilti's website for manufacturer's recommendations for fastening**

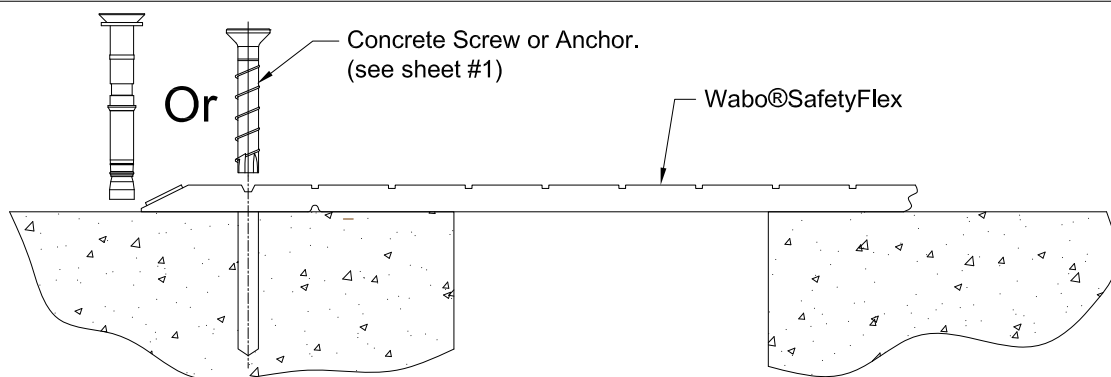


**3**

To allow for thermal expansion of the EPDM Rubber cover, leave a 1/8" Approximate gap between SafetyFlex sections.

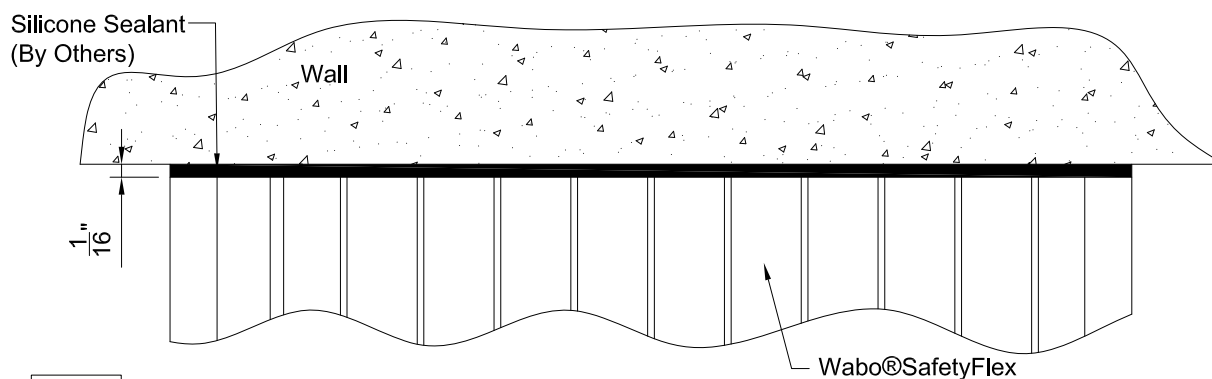
## Installation procedure: SafetyFlex system

Information provided herein, including but not limited to, any drawing, design, photograph, graphic, or statement(s) ("Materials") are proprietary and the property of Watson Bowman Acme Corporation ("Company"). Reproduction, translation, or modification to any person, medium, machine, or process, in whole or in part, is strictly prohibited, except for the express purpose of using the Materials for the specific situation for which they were intended. All rights are reserved. No warranty is made by the Company, whether verbal or written, concerning products, or the use of products in specific situations ("Advice") is given by Company and is used at the Users own risk.



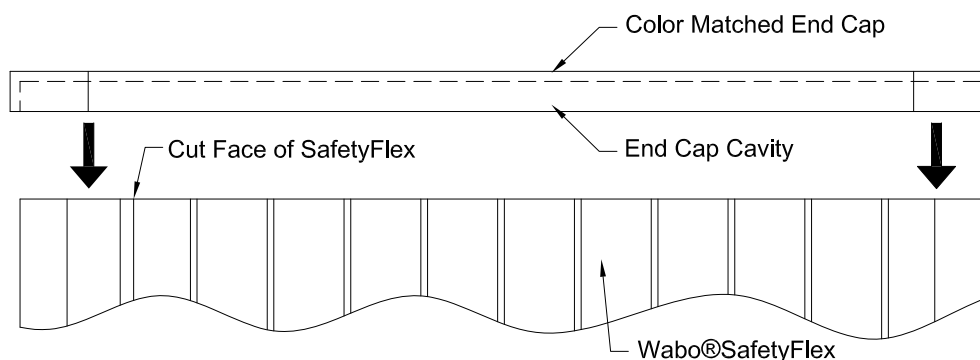
**4**

Follow anchor manufacturer's recommendations for proper anchor installation. Once anchors are in the end holes, drill remaining holes 16" O.C. and install anchors. Slight Compression of EPDM cover will occur when Threaded concrete anchor is tightened down.



**5A**

For a wall termination use a portable band saw to cut Safetyflex & leave about a 1/16" gap between SafetyFlex and the wall. Fill in remaining gap with a bead of silicone sealant (By Others).



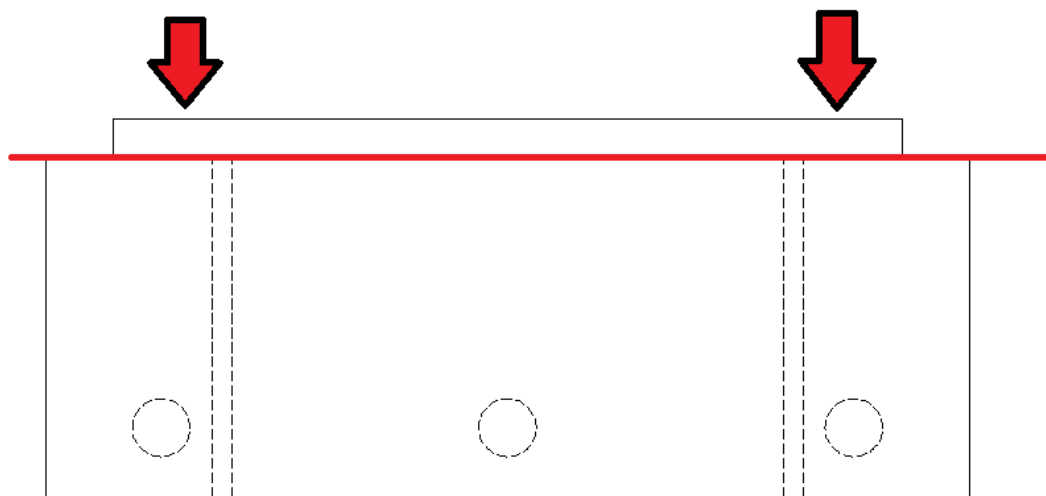
**5B**

**For End Cap use (Optional)** - Apply a bead of clear silicone (By Others) in the End Cap cavity and squeeze the end cap onto the cut face of the SafetyFlex



6

**Finished Edges** - Every WaboSafetyFlex coverplate comes with a "tongue" on one end and a "groove" on the other. The steps for having a 'finished edge' (as shown above) are as follows.



7

**Finished Edges** - Using a sliding compound miter / tile saw, cut off the tongue end (area shown above red line) at required bevel angle. Lubricate if necessary. End result should be as shown in the photo above.

Installation procedure: SafetyFlex system

Information provided herein, including but not limited to, any drawing, design, photograph, graphic, or statement(s) ("Materials") are proprietary and the property of Watson Bowman Acme Corporation ("Company"). Reproduction, translation, or reduction to any electronic medium or machine readable form, in whole or part, is strictly prohibited, except for the express purpose for which it has been furnished, without prior written consent of Company. All Materials contained herein are provided by Company for informational purposes only. Company reserves the right to amend or withdraw any information contained in the Materials without notice. All technical or other advice by Company, whether verbal or written, concerning products, or the use of products in specific situations ("Advice") is given by Company and is used at the Users own risk.