

Wabo® SafetyFlex

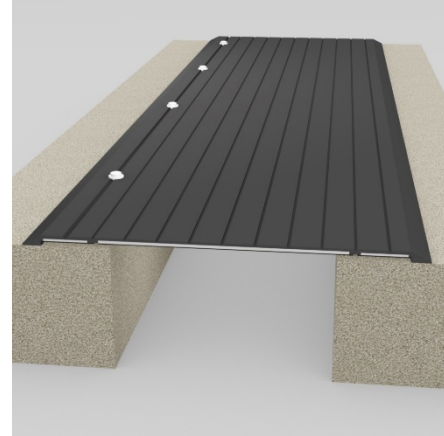
(U.S. Patent #6.751.918)

Safety Cover for Expansion Joint Openings

Features	Benefits
• Flexibility	Metal plates flex independently and provide a load bearing cover
• Sound attenuation	Rubber encapsulated metal plates eliminates the loud noise associated with most metal cover plate systems.
• Durability	Metal plates are encapsulated inside a molded rubber cover protecting the material from deterioration.
• Easy installation	Lap-joint connectors allow for easy transitions between panels.

DESCRIPTION:

Wabo® SafetyFlex is a hinged, ADA Compliant rubber encapsulated, steel cover system that is ideal for pedestrian walkways and slow speed vehicular traffic areas. The design of the system reduces potential tripping hazards by providing a smooth, slip resistant transition over expansion joint openings. Independent metal plates integral to the rubber cover allows the system to flex in response to changes in vertical displacement between opposing slabs. In addition, the use of metal plates provides load carrying capability across the joint opening and can be used in low-speed vehicular traffic areas. The rubber cover also reduces the sound caused by vehicular traffic as they travel across the expansion joint opening.



RECOMMENDED FOR:

- Stadium concourse areas.
- Pedestrian walkways
- Convention centers
- Parking structures
- Bridge walkways
- Airports

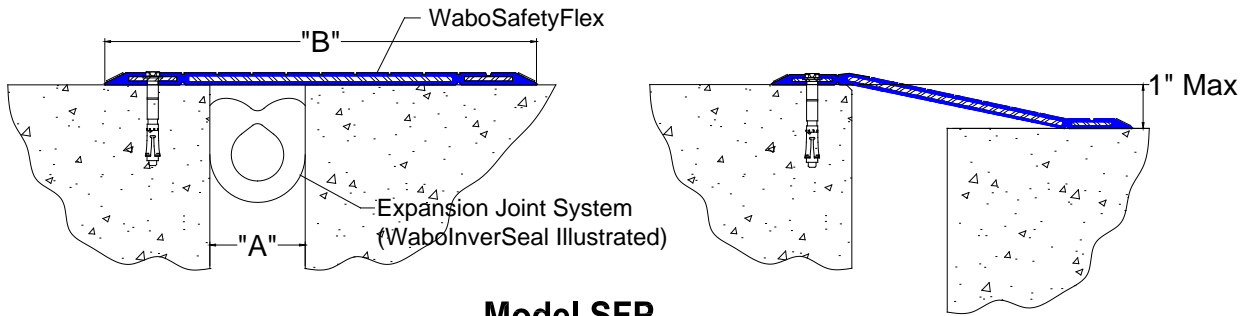
PACKAGING/COVERAGE:

- SFP-600 and SFP-1000 models are provided in 6 foot sections (actual lineal dimension is 5'-11 1/2" due to lap joint ends).
- SFP-1200, SFP-1800 and SFP-2400 models are provided in 5 foot sections (actual lineal dimension is 4'-11 1/2" due to lap joint ends).
- SFP-3100 model is provided in 4 foot sections (actual lineal dimension is 3'-11 1/2" due to lap joint ends)
- Shipped with anchor system on wooden pallets.

TECHNICAL DATA:

Design Information

Wabo®SafetyFlex is available in six different models; SFP-600, SFP-1000, SFP-1200, SFP-1800, SFP-2400 and SFP-3100. Each model is designed to accommodate both pedestrian and slow speed (< 10mph) vehicular loading. SFP-600 can accommodate pedestrian and vehicular traffic up to a max. 5-1/4" (service) & 6" (seismic). SFP-1000 can accommodate pedestrian traffic and vehicular traffic up to a max. 9-3/4" (service) & 11" (seismic). SFP-1200 can accommodate pedestrian and vehicular traffic up to a max. 11" (service) & 12" (seismic). SFP-1800 can accommodate pedestrian and vehicular traffic up to a max. 17" (service) & 18" (seismic). SFP-2400 can accommodate pedestrian and vehicular traffic up to a max. 23-1/4" (service) & 24" (seismic). SFP-3100 can accommodate pedestrian and vehicular traffic up to a max. 30-1/4" (service) & 31" (seismic). The product is provided with a standard 10mm x 70mm Heavy Duty Concrete Screw for pedestrian and vehicular applications. The system can accommodate a maximum vertical displacement of 1-inch.



Model SFP

Movement Table

Joint Opening "A"					
Model	System Width "B"	Joint Opening @ Midrange Temperature	Vehicular Joint Opening (J.O.) Max		Setback
			Service*	Seismic**	
SFP-600	12" (305)	2-5/8" (67)	5-1/4" (133)	6" (152)	4" (102)
SFP-1000	18" (457)	4-7/8" (124)	9-3/4" (248)	11" (279)	4-1/2" (114)
SFP-1200	17-1/2" (445)	5-1/2" (140)	11" (279)	12" (305)	4" (102)
SFP-1800	23-1/2" (597)	8-1/2" (216)	17" (432)	18" (457)	4" (102)
SFP-2400	29-3/4"	11-5/8" (295)	23-1/4" (591)	24" (610)	4" (102)
SFP-3100	36-3/4"	15-1/8" (384)	30-1/4" (768)	31" (787)	4" (102)

*Service movements occur due to the following design conditions, including but not limited to, thermal, wind sway, creep and shrinkage.

**Seismic movements occur under short term, high acceleration design conditions. (seismic events)



We create chemistry

PHYSICAL PROPERTIES:

Metal Plates

WaboSafetyFlex system uses ASTM A588 steel plates

Elastomeric Cover (EPDM)

PHYSICAL PROPERTY	ASTM TEST METHOD	REQUIREMENTS
Tensile Strength, min	D-412	1500 psi
Elongation at Break, min	D-412	250%
Hardness, Shore A	D-2240	65 +/- 5
Heat Resistance (70hrs @212°F) Tensile Strength, max Elongation, max Hardness, max	D-573	25% 25% 10 pts
Oil Resistance (70 hrs @212°F) Volume, max	D-471	120%
Ozone Resistance 50 pphm for 72 hrs @ 104°F	D-1149	100 rating
Compression Set 22 hrs @ 212F, max	D-395	50%

Requirements shown reflect test results taken immediately following compound mixing. Results may vary and are not indicative of product performance if specimens are skived from finished, molded parts.

APPLICATION:

INSTALLATION SUMMARY:

- Grind smooth the tops of each surface where the system will be used. Uneven surfaces can affect the anchorage of the system to the substrate.
- Position center metal plate to span and accept total movement of the structural expansion joint opening. Always anchor the system to the high side of the joint opening.
- Field drill holes 16" according to the anchor indicator cups provided on the top surface of the system.
- Install anchors into concrete and fasten cover system.

FOR BEST RESULTS:

- Construct or prepare horizontal surface in accordance with manufacturer's requirements.
- Finish grade on opposing slabs should be free of protrusions.
- Do NOT use on vertical offsets greater than 1-inch. Do NOT use in high speed/high load application. Contact WBA for recommendations.
- Make certain the most current version of the product data sheet is being used. Please consult the website (www.wbacorp.com) or contact a customer service representative.
- Proper application is the responsibility of the user. Field visits by Watson Bowman Acme personnel are for the purpose of making technical recommendations only and not for supervising or providing quality control on the jobsite.

Watson Bowman Acme Corp.
95 Pineview Drive
Amherst, NY 14228
phone: 716-691-7566
fax: 716-691-9239
wbacorp.com





We create chemistry

RELATED DOCUMENTS:

- Material Safety Data Sheets
- Wabo@SafetyFlex Specification
- Wabo@SafetyFlex Sales Drawings
- Wabo@SafetyFlex Installation Procedure

OPTIONS/EQUIPMENT:

- Hammer drill with bits.

LIMITED WARRANTY:

Watson Bowman Acme Corp. warrants that this product conforms to its current applicable specifications. WATSON BOWMAN ACME CORP. MAKES NO OTHER WARRANTY, EXPRESS OR IMPLIED, INCLUDING ANY WARRANTY OF MERCHANTABILITY OR WARRANTY OF FITNESS FOR A PARTICULAR PURPOSE. The sole and exclusive remedy of Purchaser for any claim concerning this product, including, but not limited to, claims alleging breach of warranty, negligence, strict liability or otherwise, is the replacement of product or refund of the purchase price, at the sole option of Watson Bowman Acme Corp. Any claims concerning this product shall be submitted in writing within one year of the delivery date of this product to Purchaser and any claims not presented within that period are waived by Purchaser. IN NO EVENT SHALL WATSON BOWMAN ACME CORP. BE LIABLE FOR ANY SPECIAL, INCIDENTAL, CONSEQUENTIAL (INCLUDES LOSS OF PROFITS) OR PUNITIVE DAMAGES. Other warranties may be available when the product is installed by a factory trained installer. Contact your local Watson Bowman Acme representative for details. The data expressed herein is true and accurate to the best of our knowledge at the time published; it is, however, subject to change without notice.

WaboSafetyflex_1216

Watson Bowman Acme Corp.
95 Pineview Drive
Amherst, NY 14228
phone: 716-691-7566
fax: 716-691-9239
wbacorp.com

